



## PORTFOLIO HOLDER DECISION NOTICE

### **INDIVIDUAL DECISION BY THE PORTFOLIO HOLDER FOR BUSINESS PARTNERSHIPS**

#### **TOPIC – COMMUNITY GRANT PROJECT FUNDING**

#### **PROCEDURAL INFORMATION**

The Access to Information Procedure Rules – Part 4, Section 22 of the Council's Constitution provides for a decision to be made by an individual member of Cabinet.

In accordance with the Procedure Rules, the Legal Services Manager, the Chief Executive and the Strategic Director: Resources are consulted together with Chairman and Vice Chairman of The Overview and Scrutiny Committee and any other relevant overview and scrutiny committee. In addition, all Members are notified.

If five or more Members from those informed so request, the Leader may require the matter to be referred to Cabinet for determination.

#### **Contact Officers:**

**Case Officer:** Steve Tilbury

**Democratic Services Officer:** Nancy Graham, 01962 848 235,  
ngraham@winchester.gov.uk

#### **SUMMARY**

##### **Winchester Science Centre**

The Winchester Science Centre has launched a major project, called '1in5' to improve their facilities in ways which allow them to better promote science technology engineering and maths ("STEM") education and resources. This will enhance their educational offer to local residents, particularly school age young people, and their role as a major visitor attraction in Winchester District.

The total cost of the project will be approximately £3.4m. The bulk of this will be through major Government funding streams.

The Science Centre has made a proposal and request for a grant of £50,000 from the City Council as part of its matched funding effort.

Following consideration of this proposal, including a presentation to Cabinet, it is proposed to make a grant of £50,000 which will be funded from the reserve in the commissioning budget. This would help promote the Council Strategy objective to

become a premier business location and support other objectives of promoting the health and happiness of our community.

Winchester Cathedral

The Cathedral is to commission a major new public statue of Jane Austen to highlight the author's connection with Winchester and to act as a focal point for promoting the considerable interest from visitors. It is proposed to make a grant of £25,000 (estimated at 10% of the total cost) to the Cathedral as a contribution from the City Council in recognition of the potential long term benefit to the economy and profile of Winchester.

### **DECISION**

- 1 That a grant of £50,000 be made to the Winchester Science Centre to support their '1in5' Project,
- 2 That a £25,000 grant be made to Winchester Cathedral for the Jane Austen commission, and
- 3 That authority be delegated to the Strategic Director: Services to agree terms and enter into a funding agreement with Winchester Science Centre and Winchester Cathedral which set out the detailed terms and conditions on which the grants are to be made.

### **REASON FOR THE DECISION AND OTHER ALTERNATIVE OPTIONS CONSIDERED AND REJECTED**

#### **Winchester Science Centre**

The Winchester Science Centre opened in 2002 as an independent educational charity. It has become one of the most visited and well established facilities of its type in England and is an integral part of Winchester's visitor economy.

The primary mission of the Science Centre is to enthuse and encourage young people to become engaged with the STEM subjects of science, technology, engineering and maths. These are areas with excellent employment and career opportunities which are sometimes overlooked as career choices, particularly by young women. Winchester has good links with this area of business but raising the profile of the city in this area through a high profile project would be beneficial.

The Science Centre has not previously received any revenue or capital funding from the City Council.

The Science Centre has launched an ambitious plan to improve its facilities with up to £3.4m of capital investment. This will include a new interactive science theatre for lectures and demonstrations, a new STEM based exhibition and upgrades to the

existing planetarium. As well as the direct benefits these will also improve the long term financial sustainability of the Science Centre.

The Science Centre has made a proposal and presentation to officers and the Portfolio Holder which makes a compelling case for the City Council to offer modest matched funding to indicate local support for the project. This will assist in obtaining national funding of up to £2.4m from the Government's 'Inspiring Science Fund' which will account for the bulk of the finance. The request is for £50,000. Funding for this can be drawn from the community grants and commissions earmarked reserve. This is appropriate given the positive potential impact on Council strategy objectives in relation to business, education and the visitor economy. It is a one off grant for a particular project and creates no expectation of further support. Hampshire County Council, M3 LEP and private sponsors are also being approached for matched funding.

### **Winchester Cathedral – Jane Austen Tourism**

Jane Austen Tourism:

Winchester City Council, Hampshire County Council, Tourism South East and Visit Britain have been working together with Winchester Cathedral over the last 5 years to jointly promote Jane Austen related tourism. In 2016 these efforts we consolidated with Hampshire Cultural Trust to include East Hampshire District Council and Basingstoke and Dean Council in order to create the Jane Austen 200 campaign.

This campaign in turn has secured local inclusion in a new HLF funded Visit Britain campaign to raise the profile of creative literary figures in the UK to the US and overseas market. The campaign drew international media attention - garnering in excess of £1.6m of column inches within six months of the anniversary of the author's death and successfully profiling the author, often associated most strongly with Bath, as a 'Hampshire girl'.

For the Jane Austen 200 campaign the steering group created new temporary trails and features such as the 'Rain Jane' quotes on the ground across the city centre developed by Winchester City Council with AR Design Studio, benefitting over 20 local businesses. And the Sitting with Jane bench installation from Basingstoke and Dean Council – including a decorative bench in the style of a book sited in the Cathedral outer close. Basingstoke and Dean Council, looking to remind the public that the author was born in the village of Steventon in the district, also installed a bronze statue outside the Willis Museum. Popular exhibitions were held showcasing the author's possessions and various portraits of Austen.

The installation of a statue in the Cathedral Grounds outside the Pilgrim's School would make a welcome addition to Winchester's Jane Austen product. Sited in this area a statue would maintain interest for visitors on the route from the College street house to her final resting place and offer a highlight – something to see. The high

quality of the statue and the national renown of the sculptor also add gravitas to the project, underlining that the city is keen to pay homage to this world famous author.

A contribution of £25k is proposed, which is estimated to be 10% of the total commission of c£250k. It is proposed to fund this expenditure from the community grants and commissions earmarked reserve.

**RESOURCE IMPLICATIONS:**

The proposed expenditure totaling £75k, broken down as £50k Science Centre and £25k Jane Austen Tourism, will be funded by the community grants and commissions earmarked reserve. The current forecast 2017/18 closing balance on this reserve is £172k, taking account of this commitment of £75k will leave an uncommitted reserve balance of £97k.

There will be no impact on the grants budget itself which has sufficient funds to make other grants of an urgent or unexpected nature should the need arise.

**CONSULTATION UNDERTAKEN ON THE DECISION**

The proposed decision has no negative impact on any other organisation and therefore no other consultations have taken place.

**FURTHER ALTERNATIVE OPTIONS CONSIDERED AND REJECTED FOLLOWING PUBLICATION OF THE DRAFT PORTFOLIO HOLDER DECISION NOTICE**

n/a

**DECLARATION OF INTERESTS BY THE DECISION MAKER OR A MEMBER OR OFFICER CONSULTED**

None

**DISPENSATION GRANTED BY THE STANDARDS COMMITTEE**

None required

**Approved by: (signature)**

**Date of Decision: 27.04.18**

**Councillor Robert Humby – Portfolio Holder for Business Partnerships**

**APPENDICES:** Proposal Submitted by Winchester Science Centre ‘1in5 – Making STEM accessible for all’.

# 1in5 - Making STEM accessible for all.

---

1in5 is an ambitious £3.4m project to transform Winchester Science Centre (WSC) and Planetarium into a national beacon for accessibility, to enable all children to reach their full potential in science, technology, engineering and maths (STEM).

Winchester City Council (WCC), through a financial contribution of £50,000 and project endorsement will support this transformation of WSC into a unique facility - a leader in the field of accessible science-based entertainment and education. It will inspire the next generation in ways not previously seen, helping to mould inquisitive young minds into the highly employable and skilled workforce of tomorrow.



**1in5 presents an exciting opportunity to address three of WCC's strategic outcomes:**

- making the Winchester District a premier business location
- improving the health and happiness of our community
- improving the quality of the District's environment.

**1in5 will create:**

- a state of the art live science theatre. A place where disability, STEM and the arts are shared and celebrated, this will provide new and exciting opportunities to engage with public audiences and schools
- a new large multi-sensory hands-on STEM exhibition and associated activity programme, working with partners to educate and engage the public in the impact STEM has on improving lives, and drive more visitors to the region
- upgraded planetarium facilities to futureproof it in an era of rapidly-advancing digital technology, to make it a more flexible and accessible resource, strengthening its potential to generate income the support the charitable work of the Science Centre.

# 1in5 - Making STEM accessible for all.



## Recognising support from WCC

**WSC is pleased to provide the following benefits to WCC through its support of 1in5:**

- free of charge use of the new theatre 3 times per year for 3 years
- recognition with Winchester District schools who visit WSC or participate in outreach activities - "this activity has been brought to you thanks to the generous support of Winchester City Council"
- prominent WCC branding at WSC for the 180k+ per year visitors to see at the entrance
- prominent WCC branding on the new 200 capacity Live Science Theatre at WSC
- acknowledgement in all press statements and publicity events
- recognition on signage at outreach events with WCC branding
- the WCC contribution will be recognised on **1in5.org.uk**

## *1in5* – a transformational project for Winchester Science Centre

Case for Support  
February 2018

### The Vision

Winchester Science Centre and Planetarium is an outstanding educational and visitor resource, based in the Winchester District. The registered charity sparks curiosity in people to create a society with an appetite to know more about science, technology, engineering and maths (STEM) and encourage young people from all backgrounds to have the aspiration, knowledge and skills to progress into STEM related careers.

The Science Centre is already at the heart of a regional STEM network that reaches across southern England, and boasts the largest stand-alone planetarium in the UK. It is now looking to the future in a way that is both creative and courageous. The Science Centre is keen to work with local partners to build on its current achievements and ensure that the residents of the Winchester District – present and future - derive the maximum benefit from the planned developments.

### What we want to do

Making the Winchester District a premier business location, improving the health and happiness of our community, and improving the quality of the District's environment are three of the five outcomes of the Council Strategy 2017/20. *1in5*, a major new capital project at Winchester Science Centre and Planetarium, presents an exciting opportunity to address these outcomes.

We will transform the Science Centre into a unique facility – a leader in the field of accessible science-based entertainment and education. It will inspire the next generation in ways not previously seen, helping to mould inquisitive young minds into the highly employable and skilled workforce of tomorrow. *1in5* will create

- a **state of the art live science theatre**. A place where disability, STEM and the arts are shared and celebrated, this will provide new and exciting opportunities to engage with public audiences and schools.
- a new **large multi-sensory hands-on STEM exhibition and associated activity programme**, working with partners to educate and engage the public in the impact STEM has on improving lives, and drive more visitors to the region.
- **upgraded planetarium** facilities to futureproof it in an era of rapidly-advancing digital technology, to make it a more flexible and accessible resource, strengthening its potential to generate income the support the charitable work of the Science Centre.



## How the project meets Winchester City Council's Strategic Outcomes

This project is of measurable benefit to Winchester District.

### 1) Winchester District will be a premier business location

- Prioritise support for the knowledge-based, creative and tourism sectors.
  - The live science theatre and exhibition present an exciting and creative architectural project within the Winchester District. Designed by Winchester acoustic specialists, Sustainable Acoustics, and developed in partnership with the University of Southampton.
  - The Science Centre will position itself as a national beacon for accessibility in STEM, and work with charity, industry and tourism sectors to host national and regional conferences and events.
  - The live science theatre will provide a new acoustically designed performance space within the Winchester District to benefit visitors young and old.
- Develop new employment opportunities across the District
  - Services will be procured locally throughout the build of the project where possible. The theatre and exhibition will be developed in collaboration with young people and groups representing people with a disability.
  - Once open, *1in5*, will present new volunteering, work experience and employment opportunities.

The Science Centre is building on a strong history of over 30 years as an educational charity and is one of Winchester's top visitor attractions. Occupying a prominent position within the South Downs National Park, Winchester Science Centre attracts over 170,000 visitors per year. An Economic Impact Survey conducted in 2017 has quantified the current net annual contribution made to the local area. *"Total net income generated by the exhibition was £2,971,928. This creates or sustains 48.8 net FTE jobs."* Projected visitor numbers as a result of this project are as below, creating new employment opportunities directly and indirectly.

	Visitors	School Visitors	Planetarium Tickets Sold
<b>2017/18</b>	172,000	42,000	135,000
<b>2018/19</b>	184,000	44,000	139,000
<b>2019/20</b>	189,000	45,000	143,000
<b>2020/21</b>	201,000	46,000	147,000
<b>2021/22</b>	209,000	49,000	151,000

### 2) Improve the health and happiness of our community

One in five people in the UK (13.3m) have a disability, impairment or long term illness that impacts significantly on their lives. Through a strong track record of working with the University of Southampton and partnerships with groups representing people with a disability, Winchester Science Centre has identified a need to provide a better experience for those with a disability, impairment or long-term illness. Consultation shows that *1in5* will meet this need.



- Encourage volunteering to support and extend local services, creating new volunteering opportunities and increasing the number of residents who volunteer.

The Science Centre already coordinates over 3,500 STEM Ambassador volunteers across five counties in the South of England to deliver free inspirational STEM activities to young people (run by the STEMNOW Team at the Science Centre). *1in5* will present new volunteering opportunities by putting public interaction at the heart of the organisation. Volunteer roles, appealing particularly to local people and those affected by a disability, will be available to support the live science theatre, the new exhibition and associated activity programme at weekends and during school and public holidays.

- Support the delivery of a programme of festivals and events across the District

The new live science theatre will be an important facility in the region. In addition to hosting in-house live events, which a successful pilot programme over the last year has demonstrated our audiences highly value, the theatre will provide a unique, acoustically designed and industry leading facility in Winchester to host conferences, concerts and other events. Initial discussions have taken place with arts organisations including Winchester Science Festival, Winchester Chamber Music Festival and Theatre Royal Winchester.

### **3) Improving the quality of the District's environment**

- Make Winchester a safe and pleasant place to live, work and visit

Scientists of the future need to be educated and inspired to find innovative solutions to emerging global challenges. By sparking curiosity in the public, Winchester Science Centre is making a positive contribution to the lives of people in the Winchester District and beyond.

Young people and teachers visiting with school groups (approximately 60% of Winchester District schools attended over the last 3 years) will also benefit. Winchester Science Centre and Planetarium educates over 40,000 school children every year, providing subsidised school visits to the Science Centre and delivering a programme of workshops and mobile planetarium experience for schools. 35% of Winchester District schools have engaged with STEMNOW in the past 3 years.

The largest capital project since the centre was built, *1in5* is vital to the organisation, providing financial and organisational resilience to sustain and enhance our contribution to Winchester District and beyond. The critical upgrade to the planetarium and the replacement of a temporary marquee structure with the new live science theatre significantly improve visitor experience and reduce annual maintenance and running costs. Projected increase in visitor numbers is directly attributed to the investment being made through this project.

## What are we looking for?

We are looking for partners to help us develop and fund *1in5*. The cost of the project is £3.4m. Winchester Science Centre has applied to the Inspiring Science Fund, co-funded by the Department for Business, Energy & Industrial Strategy and the Wellcome Trust, for a capital grant of £2.4m. We were successful in the first round and are now preparing our final application, the deadline for which is 28<sup>th</sup> February 2018.

Winchester Science Centre needs to secure £1m in match funding and is requesting £50k financial support from Winchester City Council. Funding is also being sought from Hampshire County Council (£250k) and Enterprise M3 LEP (£250K).

Winchester Science Centre and Planetarium has secured £70k financial support from the Institute of Sound and Vibration Research, University of Southampton, an in-kind contribution of £29k from the project architect and £30k from The Goldsmiths' Company. Further funding is being sought from identified trusts and foundations, industry partners and private donors.

Following an initial briefing meeting with Cllr Rob Humby, the Portfolio Holder for Business Partnerships, Winchester Science Centre is asking Winchester City Council to consider supporting this application with a capital grant. The Science Centre has never previously received any direct funding from the Council, as it has been considered primarily an educational resource. It has now established itself as one of the District's most popular leisure attractions, and is much-loved as a community facility for everything from birthday parties to business conferences, while retaining its clear and essential focus on teaching through inspiration and experience. The proposals outlined here demonstrate good alignment with the Council's strategic objectives for the Winchester District.

A grant of £50k from Winchester City Council would be transformative to the project and would add tremendous support to applications being made to the Inspiring Science Fund and other funders. Other funders will see a grant from the District Council as a gesture of confidence in Winchester Science Centre as a high quality leisure attraction, and in its ability to deliver this ambitious and exciting project.

We welcome this opportunity to present our project to Cabinet Members at the Science Centre.

Supporting images



Fig. 1. *1in5* will not impact on the exterior footprint of Winchester Science Centre and Planetarium.



Fig. 2. *1in5* will put people first, delivering dynamic learning experiences.



Fig. 3. *1in5* includes a critical upgrade to the planetarium, ensuring its high quality immersive experience for the future.



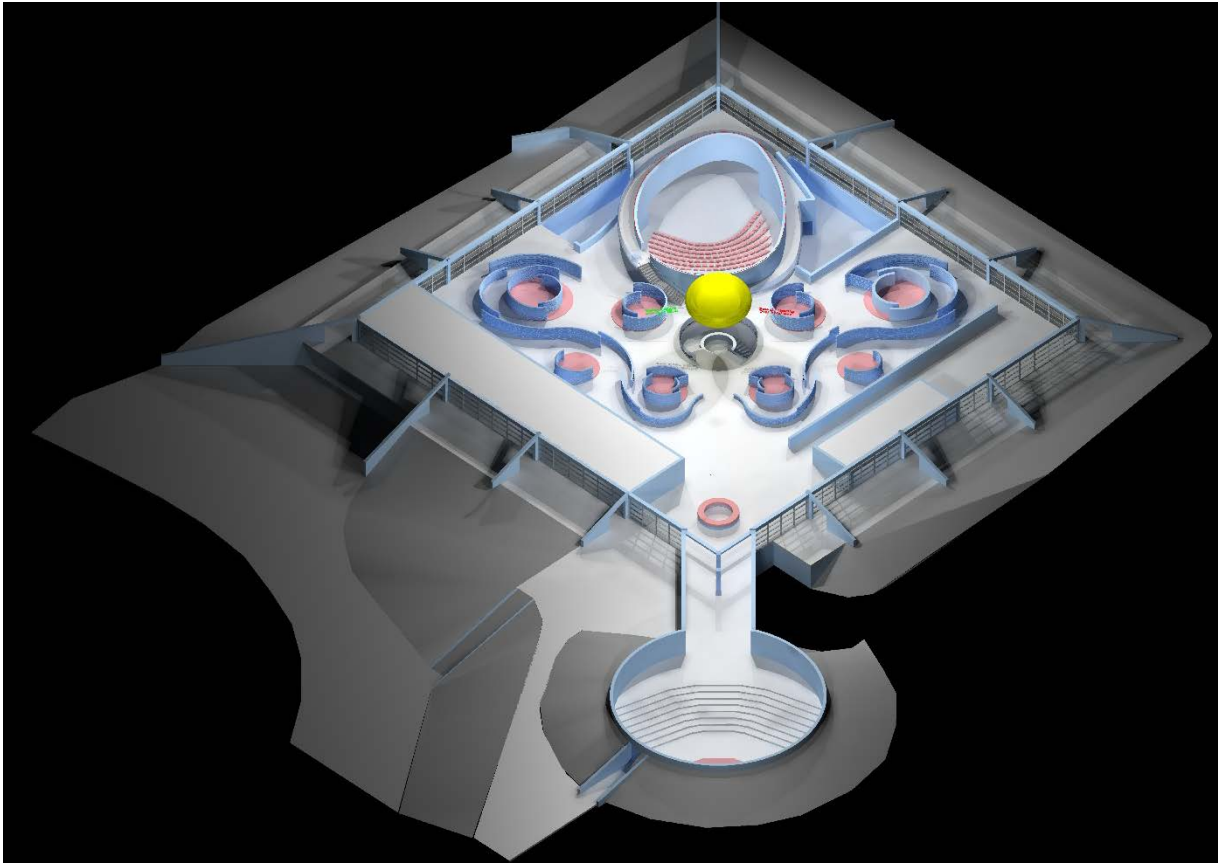


Fig. 4. *1in5* will redesign the existing space to create a new live science theatre, a multi-purpose performance space, an imaginative new exhibition encompassing the ground floor and improved infrastructure to provide a welcoming experience for all.



Fig. 5. An internal view of the live science theatre with views to the South Downs National Park.

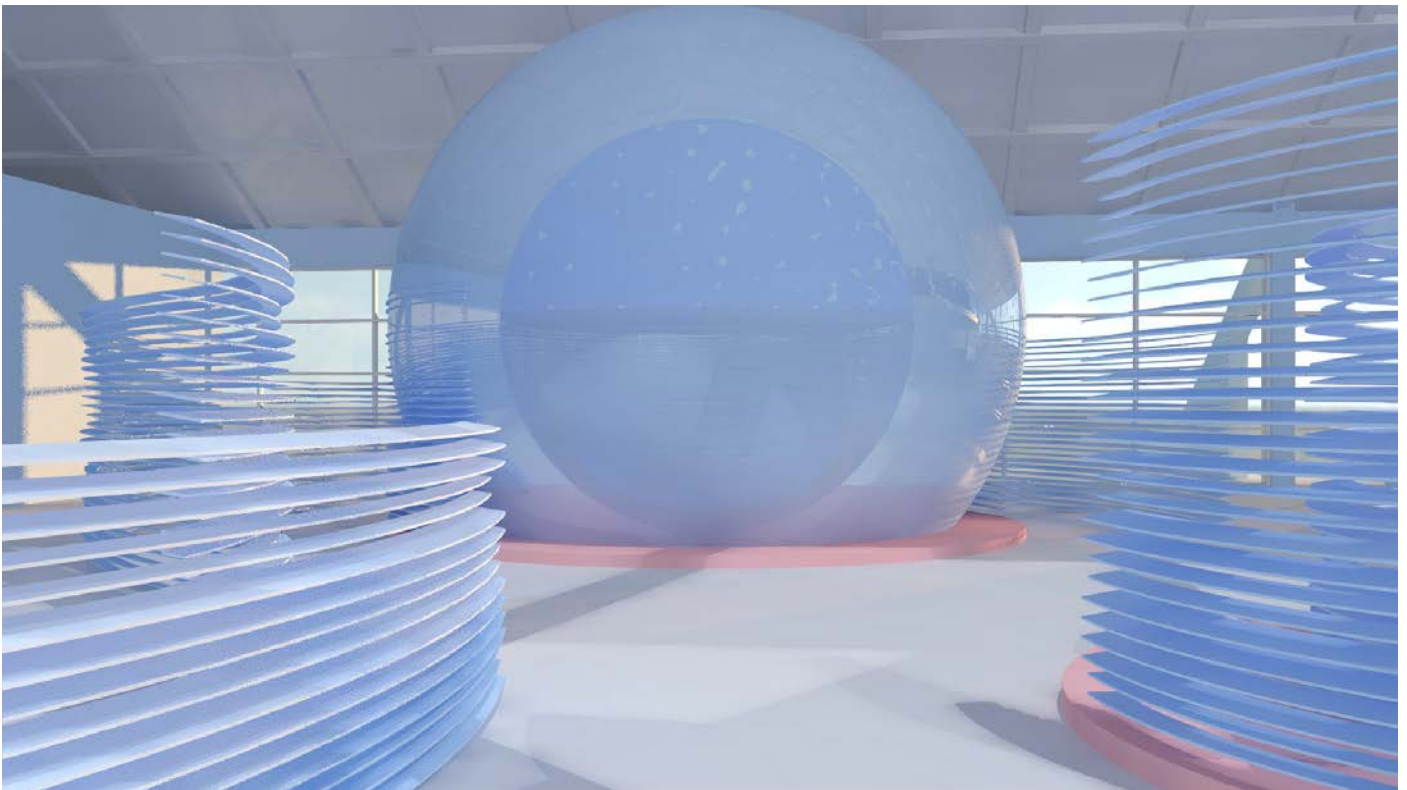


Fig. 6 and 7 *in5* will feature an entirely new approach to exhibition design – exhibits will be embedded within a flexible framework, increasing the space available for exhibits and providing floor space for people-led activities. These images present a before and after detail of the ground floor exhibition.