



DRAFT PORTFOLIO HOLDER DECISION NOTICE

PROPOSED INDIVIDUAL DECISION BY THE PORTFOLIO HOLDER FOR ENVIRONMENT AND TRANSPORT

TOPIC - PROPOSED TRAFFIC REGULATION ORDER – CHANGES TO THE EXISTING RESIDENTS PARKING BAYS AND SINGLE YELLOW LINES. ST JOHNS STREET AND BLUE BALL HILL, WINCHESTER

PROCEDURAL INFORMATION

The Access to Information Procedure Rules – Part 4, Section 22 of the Council's Constitution provides for a decision to be made by an individual member of Cabinet.

In accordance with the Procedure Rules, the Corporate Director (Governance), the Chief Executive and the Head of Finance are consulted together with Chairman and Vice Chairman of the Principal Scrutiny Committee and all Members of the relevant Scrutiny Panel (individual Ward Members are consulted separately where appropriate). In addition, all Members are notified.

Five or more of these consulted Members can require that the matter be referred to Cabinet for determination.

If you wish to make representation on this proposed Decision please contact the relevant Portfolio Holder and the following Committee Administrator by 5.00pm on Friday 24 June 2011.

Contact Officers:

Case Officer: Corinne Phillips, Traffic Engineer Tel; 01962 848326 Email cphillips@winchester.gov.uk

Committee Administrator: Nancy Graham, Senior Democratic Services, Tel 01962 848 235, Email: ngraham@winchester.gov.uk

SUMMARY

It is proposed to change the position of the residents' parking bays in St John's Street and Blue Ball Hill to accommodate a new development at St John's Croft (which has been given planning permission).

The new development will require the removal of existing bays in Blue Ball Hill to accommodate a new access but this will be mitigated by providing new bays further down St John's Street, where there is currently a single yellow line. (see Appendix 1).

It is proposed that the times of the residents' parking bays be extended from the existing 8am to 6pm to 8am to 10pm.

One letter of objection was received during the advertisement period, which is attached as Appendix 2.

The cost of the proposal is to be funded by the development at St John's Croft as the changes have been required solely to accommodate the development. There are no additional enforcement costs.

A copy of the proposed schedule, statement of reasons and legal notice is attached (Appendix 3).

PROPOSED DECISION

It is recommended that:-

1. The residents' parking bays be repositioned to accommodate the access to the new development as shown in Appendix 1 to the Portfolio Holder Decision Notice;
2. the time of the restrictions for the parking bays be changed to 8am to 10pm from the existing 8am to 6pm;
3. the Head of Legal Services be authorised to make the necessary Order to implement the above.

REASON FOR THE PROPOSED DECISION AND OTHER ALTERNATIVE OPTIONS CONSIDERED AND REJECTED

The decision to relocate the bays has been taken to accommodate the new access and has been discussed with representatives of the residents. The changes to the times of the restrictions has been requested by the residents as part of the proposals. As there was only letter of objection, the majority of residents appeared to agree with the proposals, and therefore no alternative options were considered. The letter of objection related to a proposed new residents parking bay outside numbers 10 to 13 St John's Street. The objector feels that allowing parking here would change the character of the street and the view of the church beyond. The visibility would also be impeded for cars exiting the residents parking area between numbers 9 and 10 and vehicles parked outside numbers 10 -13 would also create a chicane which would hinder larger vehicles. However, at present there is a single yellow line at this location and vehicles are frequently parked on the single yellow line during the times of the restriction as well as in the evenings and weekends. The residents specifically requested that additional parking be provided outside numbers 10 -13 due to lack of available parking through the day. The bay will be on the opposite side of the road to the existing build out so will create a 'chicane' type feature, but this should serve to slow the traffic down as it approaches the exit from the parking area. Parking is already permitted adjacent to the access to the parking area at the south of St John's Road which has not attracted complaints from residents regarding visibility.

RESOURCE IMPLICATIONS:

The changes will be funded by the developer as the bays were relocated as a direct result of the development at St John's Croft. It is funded from the agency TRO budget and is fully rechargeable to the developer.

CONSULTATION UNDERTAKEN ON THE PROPOSED DECISION

The residents of St Johns Street have been involved in the consultations via a questionnaire formulated by the residents themselves and in letters from the City Council.

FURTHER ALTERNATIVE OPTIONS CONSIDERED AND REJECTED FOLLOWING PUBLICATION OF THE DRAFT PORTFOLIO HOLDER DECISION NOTICE

n/a

DECLARATION OF INTERESTS BY THE DECISION MAKER OR A MEMBER OR OFFICER CONSULTED

n/a

DISPENSATION GRANTED BY THE STANDARDS COMMITTEE

n/a

Approved by: (signature)

Date of Decision:

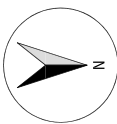
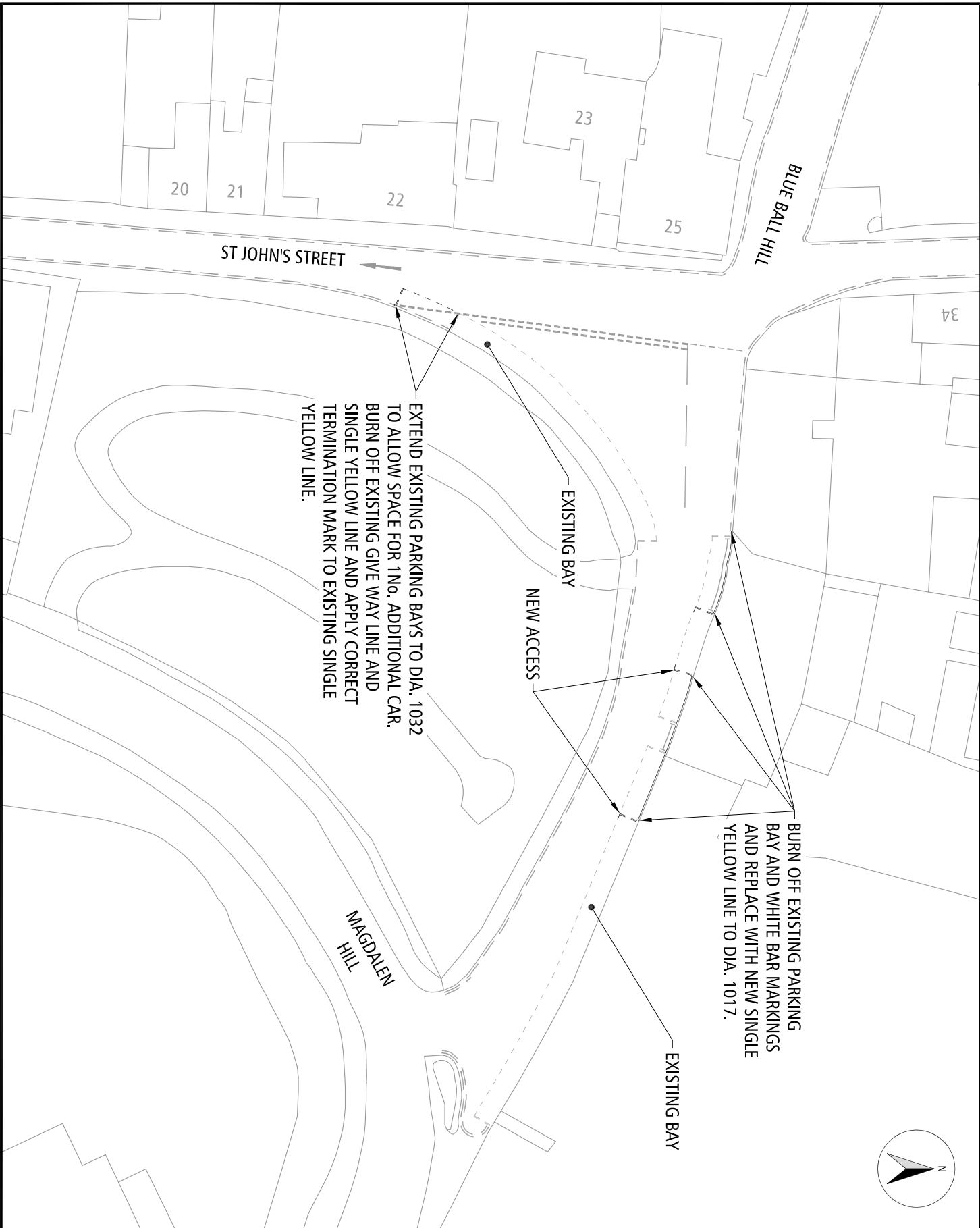
Councillor Weston – Portfolio Holder for Environment and Transport

Appendices:-

Appendix 1 – Drawing (2 parts) showing removal and addition of permit holder parking bays.

Appendix 2 – Letter of Objection from St. John's Street resident.

Appendix 3 –Statement of Reasons, Public Notice and Draft Schedule of Traffic Order.



© Crown Copyright. All rights reserved
 Winchester City Council
 Licence No. 100018301

KEY:
 --- EXISTING YELLOW LINES.

- NOTES:**
1. BAY TIMES EXTENDED TO 6pm - 10pm.
 2. ALL ROAD MARKINGS TO BE IN ACCORDANCE WITH THE T.S.R.G.D. 2002.

Rev.	Description	Date	Drawn



Winchester
 City Council

OPERATIONS GROUP
 ACCESS & INFRASTRUCTURE

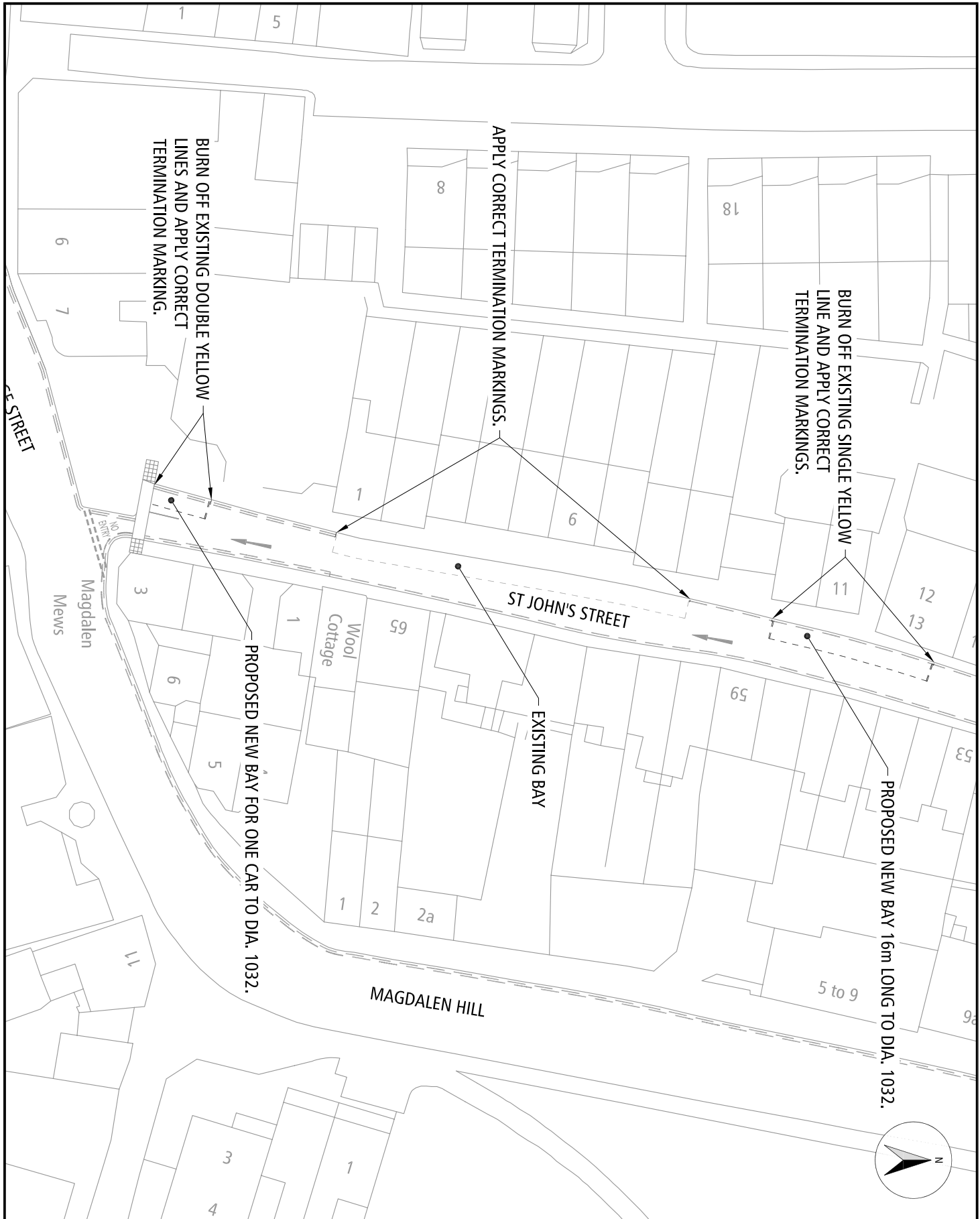
City Offices
 Colebrook Street
 Winchester,
 SO23 9UL



Project: BLUE BALL HILL
 & ST JOHN'S STREET

Title: REMOVAL & ADDITION OF
 PERMIT HOLDER PARKING BAYS

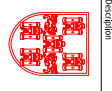
Scale: 1:500	Date: 05/08/10
Drawn: MCH	Checked:
DRG. No. 810402-212001	Status: P



© Crown Copyright. All rights reserved
 Winchesteer City Council
 Licence No. 100018301

KEY:
 --- EXISTING YELLOW LINES.

- NOTES:**
1. BAY TIMES EXTENDED TO 6pm - 10pm.
 2. ALL ROAD MARKINGS TO BE IN ACCORDANCE WITH THE T.S.R.G.D. 2002.



Winchester
 City Council

OPERATIONS GROUP
 ACCESS & INFRASTRUCTURE

City Offices
 Colebrook Street
 Winchester,
 SO23 9UL



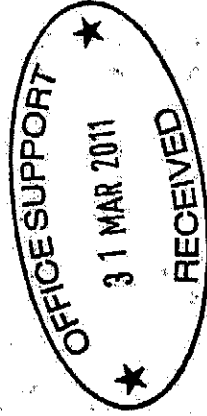
Project: BLUE BALL HILL
 & ST JOHNS STREET

Title: REMOVAL & ADDITION OF
 PERMIT HOLDER PARKING BAYS

Scale: 1:500 Date: 05/08/10
 Drawn: MCH Checked:
 DRG. No. 810402-212002 Status: P

Parking proposals in
St John's Street.

CSS RECEIVED	
31 MAR 2011	
FAO NAN	REPLY BY 4/4
NO 7310	



30 March 2011

Dear Mr Bale,

I am writing to object to one feature of the changes in parking in St John's Street. You asked for objections by 1st April 2011. My objection concerns the new bays alongside numbers 10, 11, 12, 13 on the west side of the street. I have marked this on my attached sheet number 1.

The grounds for my objection are:

A. If you stand by number 9 looking north you see no cars parked (during the day). This is unusual so near the centre of a town (compare with Colebrook Street which is extensively lined by cars). This view is shown on sheet 2 photograph a. What you see is the oldest parish church in Winchester, the old school (with the 18th century St John's Croft beyond), a 16th century timbered house (opposite numbers

14, 15 and 17), 19th century houses - not
a car in sight. Like has changed here
for over a hundred years. This is emphasized
on sheet 3 - first a photograph which
appeared in Andrew Butler's book (ca. 1900)
and a recent photograph. The view is a gap
of a view of an historic street - and this
street increasingly becomes a car park. Sheet 2 b
shows my impression of more intrusion & parked cars.
B. With the new bay, driving out from the
residents car park (between 9 and 10), the
view to the left would be obstructed making
it difficult to see if cars are coming down
the street. A van parked there would make
it impossible to see. This is dangerous.

C. The new bay with cars together with
the projecting pavement outside the
Twen Horse would make for an awkward
chicane.

When I wrote about something three or four
years ago I was sent an acknowledgement.
Please may I have one to this? It is
reassuring to know that one's views have
been received by the right department and person.

With thanks

Yours sincerely,

*

The case for
the removal
of the
car park
at the
end of
the
street.

PROPOSED NEW ORDER-

WINCHESTER CITY COUNCIL

ROAD TRAFFIC REGULATION ACT 1984

THE HAMPSHIRE (VARIOUS ROADS, WINCHESTER)
(PARKING PLACES AND RESTRICTION OF WAITING) (CONTROLLED ZONE) 2011

STATEMENT OF REASONS:-

The scheme is being proposed due to the removal and relocation of parking bays to accommodate the access to a new development.

EXISTING

<u>SCHEDULE I Pt II PERMIT HOLDERS ONLY 8.00am to 6.00pm MONDAY TO SATURDAY</u>			
Blue Ball Hill	North	Between a point 8.3 metres west of its junction with Magdalen Hill and a point 42.5 metres east of its junction with Beggars Lane	B
Blue Ball Hill	South	Between its junction with St Johns Street and a point 21.2 metres east of that junction	B
Blue Ball Hill	South	Between a point 19.5 metres west of its junction with St John's Street and a point 12.8 metres east of its junction with Chester Road	B
St John's Street	West	Between a point 21 metres north of it junction with Bridge Street and a point 57 metres north of that junction	B
St John's Street	East	Between its junction with Blue Ball Hill and a point 32 metres south of that junction	B
<u>SCHEDULE II – NO WAITING AT ANY TIME</u>			
Blue Ball Hill	North	Between its junction with Magdalen Hill and a point 8.3 metres north-west of that junction	B
Blue Ball Hill	South	Between its junction with Magdalen Hill and a point 3.5 metres west of that junction	B
St Johns Street	East	Between a point 4 metres north of it junction with Bridge Street and a point 22.1 metres north of that junction	B
St John's Street	West	Between a point 8 metres north of its junction with Bridge Street and a point 28.8 metres north of that junction	B

**SCHEDULE IV NO WAITING AT ANY TIME AND NO LOADING 7.30am to 9.30am AND
4.30pm to 6.00pm MONDAY TO SATURDAY**

St Johns Street	East	Between its junction with Bridge Street and a point 4 metres north of that junction	B
St Johns Street	West	Between its junction with Bridge Street and a point 8 metres north of that junction	B

SCHEDULE V – NO WAITING 8.00am to 6.00pm MONDAY TO SATURDAY

Blue Ball Hill	North	Between a point 42.5 metres east of its junction with Beggars Lane and its junction with Water Lane	B
Blue Ball Hill	South	Between its junction with Water Lane and a point 12.8 metres east of its junction with Chester Road	B
Blue Ball Hill	South	Between a point 3.5 metres west of its junction with Magdalen Hill and a point 55.2 metres west of that junction	B
Blue Ball Hill	South	Between its junction with St Johns Street and a point 19.5 metres west of that junction	B
St Johns Street	East	Between a point 22.1 metres north of its junction with Bridge Street and a point 214. 8 metres north of that junction	B
St Johns Street	West	Between a point 57 metres north of its junction with Bridge Street and its junction with Blue Ball Hill	B
St Johns Street	West	Between its junction with Blue Ball Hill and a point 12 metres south of that junction	B

PROPOSED

<u>SCHEDULE I Pt II – PERMIT HOLDERS ONLY 8.00am to 10.00pm MONDAY TO SATURDAY</u>			
NAME OF ROAD	SIDE	DESCRIPTION	ZONE
St John's Street	West	Between a point 7metres north of the junction with Bridge Street to a point 12.5 metres north of that junction	B
St John's Street	West	Between a point 26 metres north of the junction with Bridge Street and a point 62.5 metres north of that junction	B
St John's Street	West	Between a point 70.5 metres north of the junction with Bridge Street and a point 85 metres north of that junction.	B
St John's Street	East	From the junction of Blue Ball Hill to a point 6 metres south of that junction	B
Blue Ball Hill	North	Between a point 3.5 metres west of its junction with Magdalen Hill to a point 37 metres west of that junction	B
Blue Ball Hill	North	Between a point 49 metres west of the junction of Magdalen Hill to a point 55 metres west thereof (a distance of 6 metres)	B
Blue Ball Hill	South	Between a point 53.5 metres west of the junction of Magdalen Hill to the junction with St John's Street	B
Blue Ball Hill	South	Between a point 19.5 metres west of its junction with St John's Street and a point 12.8 metres east of its junction with Chester Road	B
<u>SCHEDULE II – NO WAITING AT ANY TIME</u>			
St John's Street	West	From the junction with Bridge Street to a point 7 metres north thereof	B
St John's Street	West	From a point 12 metres north of the junction of Bridge Street to a point 26 metres north thereof	B

St John's Street	East	From the junction of Bridge Street to a point 25 metres north of that junction.	B
Blue Ball Hill	South	Between its junction with Magdalen Hill and a point 3.5 metres west of that junction	B
Blue Ball Hill	North	Between its junction with Magdalen Hill and a point 3.5 metres north-west of that junction	B

SCHEDULE IV – NO WAITING 8am -6pm MONDAY TO SATURDAY

St John's Street	East	From a point 25 metres north of the junction with Bridge Street to a point 211 metres north of the junction with Bridge Street	B
St John's Street	West	From a point 62.5 metres north of the junction of Bridge Street to a point 70.5 metres north of the junction of Bridge Street (A total distance of 8 metres)	B
St John's Street	West	From a point 85 metres north of the junction of Bridge Street to a point 246.5 metres north of the junction of Bridge Street (the junction of Beggars lane)	B
Blue Ball Hill	North	Between the junction of Beggars Lane and the junction of Water Lane	B
Blue Ball Hill	North	Between the junction of Beggars Lane and a point 55 metres west of the junction with Magdalen Hill	B
Blue Ball Hill	North	Between a point 33 metres east of the junction of Beggars Lane to a point 45 metres east of the junction of Beggars Lane (a total distance of 12 metres)	B
Blue Ball Hill	South	Between its junction with Water Lane and a point 12.8 metres east of its junction with Chester Road	B
Blue Ball Hill	South	Between a point 3.5 metres west of the junction of Magdalen Hill to a point 21.5 metres east of the junction with St John's Street	B
Blue Ball Hill	South	Between its junction with St Johns Street and a point 19.5 metres west of that junction	B

**Notice of Proposals of making of Various Road Traffic Regulation Orders
Affecting the District of Winchester City Council**

Winchester City Council as agents for Hampshire County Council proposes making the undermentioned road traffic regulation order:-

4. The Hampshire (Various Roads Winchester) (Parking Places And Restriction Of Waiting) (Controlled Zone) (Consolidation) Order 2010 (Variation No.2) Order 2011
The effect of this order will be to relocate parking bays and extend permit holders times for parking. Details are as follows:-

<u>PERMIT HOLDERS ONLY 8.00am to 10.00pm MONDAY TO SATURDAY</u>			
<i>NAME OF ROAD</i>	<i>SIDE</i>	<i>DESCRIPTION</i>	<i>ZONE</i>
St John's Street	West	Between a point 7metres north of the junction with Bridge Street to a point 12.5 metres north of that junction	B
St John's Street	West	Between a point 26 metres north of the junction with Bridge Street and a point 62.5 metres north of that junction	B
St John's Street	West	Between a point 70.5 metres north of the junction with Bridge Street and a point 85 metres north of that junction.	B
St John's Street	East	From the junction of Blue Ball Hill to a point 6 metres south of that junction	B
Blue Ball Hill	North	Between a point 3.5 metres west of its junction with Magdalen Hill to a point 37 metres west of that junction	B
Blue Ball Hill	North	Between a point 49 metres west of the junction of Magdalen Hill to a point 55 metres west thereof (a distance of 6 metres)	B
Blue Ball Hill	South	Between a point 53.5 metres west of the junction of Magdalen Hill to the junction with St John's Street	B
Blue Ball Hill	South	Between a point 19.5 metres west of its junction with St John's Street and a point 12.8 metres east of its junction with Chester Road	B
<u>NO WAITING AT ANY TIME</u>			
St John's Street	West	From the junction with Bridge Street to a point 7 metres north thereof	B
St John's Street	West	From a point 12 metres north of the junction of Bridge Street to a point 26 metres north thereof	B
St John's Street	East	From the junction of Bridge Street to a point 25 metres north of that junction.	B

Blue Ball Hill	South	Between its junction with Magdalen Hill and a point 3.5 metres west of that junction	B
Blue Ball Hill	North	Between its junction with Magdalen Hill and a point 3.5 metres north-west of that junction	B
<u>NO WAITING 8am -6pm MONDAY TO SATURDAY</u>			
St John's Street	East	From a point 25 metres north of the junction with Bridge Street to a point 211 metres north of the junction with Bridge Street	B
St John's Street	West	From a point 62.5 metres north of the junction of Bridge Street to a point 70.5 metres north of the junction of Bridge Street (A total distance of 8 metres)	B
St John's Street	West	From a point 85 metres north of the junction of Bridge Street to a point 246.5 metres north of the junction of Bridge Street (the junction of Beggars lane)	B
Blue Ball Hill	North	Between the junction of Beggars Lane and the junction of Water Lane	B
Blue Ball Hill	North	Between the junction of Beggars Lane and a point 55 metres west of the junction with Magdalen Hill	B
Blue Ball Hill	North	Between a point 33 metres east of the junction of Beggars Lane to a point 45 metres east of the junction of Beggars Lane (a total distance of 12 metres)	B
Blue Ball Hill	South	Between its junction with Water Lane and a point 12.8 metres east of its junction with Chester Road	B
Blue Ball Hill	South	Between a point 3.5 metres west of the junction of Magdalen Hill to a point 21.5 metres east of the junction with St John's Street	B
Blue Ball Hill	South	Between its junction with St Johns Street and a point 19.5 metres west of that junction	B

Further Details :_ a copy of this notice, the proposed orders, and maps showing the location and effect of the proposals, a statement of reasons and the orders to be varied may be inspected during usual office hours at the following place:-

(i) City Offices, Colebrook Street, Winchester.

OBJECTIONS: All objections and other representations in respect of this proposal must be sent in writing to the undersigned by 1st April 2011 .
All objections must state the grounds on which they are made.

Dated this 2nd day of March 2011
H. N. Bone, Head of Legal Services, Winchester City Council,
City Offices, Colebrook Street, Winchester, Hampshire.