

# Appendix E01

List of consultees and responses  
received

Appendix E01

List of Statutory Consultees notified of the Plans for Places Consultation , by letter on 27 June 2011

Type	Organisation
	Hampshire County Council
All relevant authorities – All Town & Parish Councils within the district	Badger Farm Parish Council
	Bighton Parish Council
	Bishops Sutton Parish Council
	Bishops Waltham Parish Council
	Boarhunt Parish Council
	Bramdean And Hinton Ampner Parish Council
	Cheriton Parish Council
	Colden Common Parish Council
	Compton And Shawford Parish Council
	Corhampton And Meonstoke Parish Council
	Crawley Parish Council
	Curdridge Parish Council
	Denmead Parish Council
	Droxford Parish Council
	Durley Parish Council
	Hambledon Parish Council
	Headbourne Worthy Parish Council
	Hursley Parish Council
	Itchen Stoke And Ovington Parish Council
	Itchen Valley Parish Council
	Kilmeston Parish Council
	Kingsworthy Parish Council
	Littleton And Harestock Parish Council
	Micheldever Parish Council
	New Alresford Town Council
	Northington Parish Council
	Old Alresford Parish Council
	Olivers Battery Parish Council
	Otterbourne Parish Council
	Owslebury Parish Council
	Shedfield Parish Council
	Soberton Parish Council
	South Wonston Parish Council
	Southwick And Widley Parish Council
	Sparsholt Parish Council
	Swanmore Parish Council
	Titchborne Parish Council
	Twyford Parish Council
	Upham Parish Council
	West Meon Parish Council
Whiteley Parish Council	
Wickham Parish Council	
Wonston Parish Council	
Beauworth Parish Meeting	
Chilcomb Parish Meeting	
Exton Parish Meeting	
Warnford Parish Meeting	
All relevant	Portsmouth City Council

authorities – adjoining local planning authorities	Test Valley Borough Council
	East Hampshire District Council
	Basingstoke and Deane Borough Council
	Eastleigh Borough Council
	Fareham Borough Council
	Havant Borough Council
	Partnership for Urban South Hampshire
All relevant authorities – All Town & Parish Councils adjoining the district	Horndean Parish Council
	Clanfield Parish Council
	Froxfield Parish Council
	Ropley Parish Council
	Meadstead Parish Council
	Wield Parish Council
	Candovers Parish Council
	Steventon Parish Council
	Whitchurch Town Council
	Hurstbourne Priors Parish Council
	Bullington Parish Council
	Barton Stacey Parish Council
	Chilbolton Parish Council
	Kings Somborne Parish Council
	Braishfield Parish Council
	Ampfield Parish Council
	Bishopstoke Parish Council
	Fair Oak and Horton Heath Parish Council
	Botley Parish Council
	East Meon Parish Council
	West Tisted Parish Council
	Popham Parish Meeting
	Overton Parish Council
Laverstoke and Freefolk Parish Council	
Leckford Parish Council	
Little Somborne Parish Council	
Government Agency/Department	Highways Agency
	Environment Agency
	Department for Transport
	English Heritage
	Natural England
	South East Economic Development Agency (SEEDA)
	South Downs National Park
	Hampshire & IOW Strategic Health Authority
Health Authority	East Hampshire Public & Patient Involvement Forum
	Hampshire Primary Care Trust
	NHS South Strategic Health Authority
	Hampshire Constabulary
Police Authority	Hampshire Police Liaison
	Transco
Energy supplier/provider	Southern Electric Plc
	Scottish and Southern Energy
	Esso Pipelines
	British Gas Properties
	Southern Electricity Plc
	EDF Energy Networks
	E.on Energy
	RWE Npower
	Centrica Plc
	Scottish Power Energy Networks
British Telecommunications Plc	

Telecoms	Mobile Operators Association
	Portsmouth Water Company
Water and Sewage	Southern Water
	South East Water
	South West Defence Estates
Government departments who may have large landholdings in the area covered by a local development document	The Coal Authority
Other specific consultees	The Gypsy Council
	Network Rail

The following statutory consultees responded:

Basingstoke & Deane Borough Council  
 Boarhunt Parish Council  
 Bishop's Waltham Parish Council  
 Compton and Shawford Parish Council  
 Curdridge Parish Council  
 Colden Common Parish Council  
 Chilcomb Parish Meeting  
 Crawley Parish Council  
 Denmead Parish Council  
 Environment Agency  
 Eastleigh Borough Council  
 English Heritage  
 Fareham Borough Council  
 Hursley Parish Council  
 Hampshire County Council  
 Highways Agency  
 Itchen Stoke and Ovington Parish Council  
 Itchen Valley Parish Council  
 Kingsworthy Parish Council  
 Northington Parish Council  
 Natural England  
 New Alresford Town Council  
 Otterbourne Parish Council  
 South Wonston Parish Council  
 Southern Water  
 Sparsholt Parish Council  
 Shedfield Parish Council  
 Swanmore Parish Council  
 Tichborne Parish Council  
 Thames Water  
 The Coal Authority  
 Twyford Parish Council  
 Upham Parish Council  
 Wonston Parish Council  
 Wickham Parish Council

West Meon Parish Council

General and Other consultee

List of general Consultees notified of the Plans for Places Consultation, by letter/email on 27 June 2011

Type	Organisation
Government Agencies/Departments	Health and Safety Executive
	Skills Funding Agency
	Young Peoples Learning Agency
	Hampshire Fire and Rescue
	Forestry Commission
Business/Economy	Aldi Stores (Swindon)
	Harvey Cole
	Alresford Chamber of Commerce
Community/Voluntary Group	Whiteley Community Association
	Wickham Community Association
	Bishops Waltham Community Responders
	Winchester Area Community Action (WACA)
	Community Action Hampshire
	Denmead community Centre
	Colden Comon Community Association
	Winnall Community Association
	Age Concern (Age UK)
	Bishops Waltham Gardening Club
	Winchester New Allotment Holders Society Ltd
	Age UK
	Community Action Hampshire
	Winchester Area Community Action (WACA)
	Winchester and District Mencap Society
	Carroll Youth Centre
	Stanmore Combined
	Weeke Community Association
	Kilmeston Village Hall Management Committee
	Winchester Round Table
	Rotary Club of Winchester & District
	Winchester Meadows Conservation Alliance
	Culture and Heritage
City of Winchester Trust	
The Theatres Trust	
Education Establishment	The Westgate School, Winchester
	Perin's School, New Alresford
	Swanmore College of Technology
	Cowplain Community School, Waterlooville
	Oaklands Catholic Voluntary Aided Secondary School
	Henry Cort Community College, Fareham
	Winchester School of Art
	South Downs College, Waterlooville
	Southampton Solent University
	Southampton City College
	Fareham College
	Havant College
	Sparsholt College
	Henry Beaufort School, Winchester
	Kings School, Winchester
	Peter Symonds College, Winchester
	ACE Peter Symonds College, Winchester
	Winchester College
	University of Winchester

Equalities	Equality and Human Rights Commission
Health	South Central Ambulance Service NHS Trust
	Denmead Health Centre
	The Alresford Surgery
	Dean Surgery, New Alresford
	Badger Farm Surgery, Winchester
	Twyfor Surgery
	Friarsgate Practice, Winchester
	St Clements Street Surgery, Winchester
	St Paul's Surgery, Winchester
	Wickham Surgery
	The Whiteley Surgery
	Bishops Waltham Surgery
	Droxford Surgery
	The Surgery, Waterlooville
	Queenswood Surgery, Waterlooville
Landowner/developer interests	Prudential Property Investment Managers
	North Hedg End Consortiium
	Eagle Star Estates Ltd
	The Whiteley Co-ownership
	Bewley Homes
	Bovis Homes
	Burton Property
	Chalkbank Estates
	Chasemount Homes
	Grainger Plc
	Heron Land Developments
	Highbridge Properties
	King Sturge
	Mapledean Developments Ltd
	Persimmon Homes
	Prudential Property Inv and Buckland Dev Ltd
	Taylor Wimpey
	Tichbourne Estate
	North Whiteley Consortium
	Weatherstone Properties Ltd
	CALA Homes
	Gleeson Homes
	Laney Properties Ltd
Redrow Homes (Southern) Ltd	
Southcott Homes	
Annington Development Ltd	
Avington Associates	
'Other' consultation bodies	Civil Aviation Authority
	RSPB South East Office
	BAA Southampton Airport Ltd
	Winchester Friends of the Earth
	English Welsh and Scottish Railway
	Hampshire and IOW Wildlife Trust
	Winchester Action on Climate Change (WinACC)
	Hampshire Probation Trust
Registered Social landlords	Sovereign Kingfisher
	Hyde Housing Association
	First Wessex (Atlantic Housing)
	Radian Group
	Drum Housing Association Ltd

	Swaything Housing Society Ltd
	a2Dominion Housing
Religious/Ethnic groups	Christ Church, Winchester
	The United Church, Winchester
	St Mary's Parish Church, Twford
	Holy Trinity Church, Colden Common
	Colden Common Methodist Church
	St Matthew Otterbourne
	Winchester Muslim Cultural Association
	Three Faiths Forum
	St Lukes Church, Winchester
	Catholic Diocese of Portsmouth
	Anglican Diocese of Portsmouth
	The Diocese of Winchester
	Winchester Cathedral
	St Peter's Parish Church, Bishops Waltham
	Winchester Family Church
	Hampshire Inter Faith Network
	St Nicholas Parish Church
Wickham Methodist Church	
Resident Associations	Badger Farm and Olivers Battery Residents Assoc.
	The Wickham Society
	Bishops Waltham Society
	Winchester City Residents Association
	Save Barton Farm Group
	Denmead Village Association
	Bishops Waltham Residents Association
	Alresford Society
	Dever Society
	St Giles Hill Residents Association
	St Swithun Street and Symonds Street Res Assoc
	Stanmore and District Community Centre
	Sleepers Hill Association
	Teg Down Residents Association
	Funtley Village Society
	Shawford Village Residents Association
	Twyford Residents Association
Sport and Leisure	Hampshire Playing Fields Association
	Fareham Leisure Centre
	Meadowside Centre
	Westgate Badminton Centre
	Waterlooville Leisure Centre
	Marwell Activity Centre
	River Park Leisure Centre
	Winchester Sport Association for the Disabled
	Sport England (South East Region)
	The Lawn Tennis Association
Winchester and District Athletic Club	



# Appendix E02

Copies of letters sent

## Appendix E02 Letters sent informing of Plans For places Consultation

To: Specific Consultees  
(excluding Parish Councils)

Your Ref:  
Our Ref:  
Enq to:  
Direct Line:  
Email:

10 January 2012

Dear Sirs

### **'Plans for Places...after *Blueprint*' consultation**

#### **Part of the Winchester District Development Framework Core Strategy**

You may recall being consulted on earlier versions of the City Council's emerging LDF Core Strategy, most recently the 'Preferred Option' version in May 2009. Since then the Council has been reassessing development needs and undertook a major public involvement exercise on this in late 2010, called 'Blueprint'.

The Council has now considered the many and varied comments it received to Blueprint and has used these to set out draft planning strategies for the whole of the Winchester District in its new document published for consultation - 'Plans for Places...after *Blueprint*'. This forms part of its emerging LDF Core Strategy. This consultation is undertaken in accordance with Regulation 25 of the Town and Country Planning (Local Development) (England) Regulations 2004 (as amended).

'Plans for Places...after *Blueprint*', does not include formal planning policies but highlights the many challenges facing the District and suggests a way forward looking ahead to 2031. It takes into account updated technical evidence and views submitted through Blueprint. In particular it uses revised population and housing projections to generate a new District-wide housing requirement. This is distributed across the District, focussing growth in the larger more urban areas, but acknowledging that many smaller rural settlements may also wish to be able to accommodate small scale appropriate development.

We would like your views on our emerging planning policy. 'Plans for Places...after *Blueprint*', can be viewed on line at [www.winchester.gov.uk/plans4places](http://www.winchester.gov.uk/plans4places). To assist you to comment on the document we have created a series of consultation questions, the easiest and quickest way to access and complete these is online via the above web address. You may also download the questions and send them back to us via email ([LDF@winchester.gov.uk](mailto:LDF@winchester.gov.uk)) or post them to the address at the top of the page.

Your comments need to be with us by 5 pm on Monday 8<sup>th</sup> August 2011. During the autumn we will then prepare a revised Core Strategy, in anticipation of publishing it in late 2011 and submitting it to Government for consideration in early 2012.

Yours faithfully

Steve Opacic,  
Head of Strategic Planning

To Parish Councils

Your Ref:  
Our Ref:  
Enq to:  
Direct Line:  
Email:

10 January 2012

Dear Parish Clerk

**'Plans for Places...after *Blueprint*' consultation**

Winchester City Council has now considered the many and varied comments it received to *Blueprint* and has used these to set out draft planning strategies for the whole of the Winchester District in its new document published for consultation - '*Plans for Places...after Blueprint*', which forms part of its emerging LDF Core Strategy.

*Plans for Places...after Blueprint*, does not include formal planning policy but highlights the many challenges facing the District and suggests a way forward looking ahead to 2031. It takes into account updated technical evidence and views submitted through *Blueprint*. In particular it uses revised population and housing projections to generate a new District wide housing requirement which is allocated across the District, focussing growth in the larger more urban areas, but acknowledging that many smaller rural settlements may also wish to be able to accommodate small scale appropriate development.

You may also wish to know that a piece of work is being undertaken to identify and summarise all of the issues raised during the consultation that are 'non-planning'. A further e-mail will be sent to the parish clerk shortly by the Community Planning Officers, with a specific summary for your parish and an indication as to how the Council could help you and others to address these local issues.

We would like your views on our emerging planning policy. A copy of *Plans for Places...after Blueprint*, is included, together with some posters that we would appreciate if you could display to inform other people that this document is out to consultation.

'*Plans for Places...after Blueprint*' can also be viewed on line at [www.winchester.gov.uk/plans4places](http://www.winchester.gov.uk/plans4places). To assist you to comment on the document we have created a series of consultation questions, the easiest and quickest way to access and complete these is online via the above web address. You may also download the questions and send them back to us via email ([LDF@winchester.gov.uk](mailto:LDF@winchester.gov.uk)) or post them to the address at the top of the page.

However you decide to respond, your comments need to be with us by 5 pm on Monday 8<sup>th</sup> August 2011.. During the autumn, we will then prepare a revised Core Strategy, in anticipation of submitting it to Government for consideration in early 2012.

Yours sincerely

Steve Opacic  
Head of Strategic Planning

To General/Other consultees

Your Ref:  
Our Ref:  
Enq to:  
Direct Line:  
Email:

10 January 2012

Dear

**'Plans for Places...after Blueprint' consultation**

You may recall that last year the Council undertook a consultation exercise called 'Blueprint'. The purpose of Blueprint was to explore with communities how their housing and development needs may change looking ahead twenty years to feed into our emerging Core Strategy. Winchester City Council has now considered the many and varied comments it received to Blueprint and has used these to set out draft planning strategies for the whole of the Winchester District in its new document published for consultation - 'Plans for Places...after Blueprint', which forms part of its emerging LDF Core Strategy.

Plans for Places...*after Blueprint*, does not include formal planning policy but highlights the many challenges facing the District and suggests a way forward looking ahead to 2031. It takes into account updated technical evidence and views submitted through Blueprint. In particular it uses revised population and housing projections to generate a new District wide housing requirement which is allocated across the District, focussing growth in the larger more urban areas, but acknowledging that many smaller rural settlements may also wish to be able to accommodate small scale appropriate development.

We would like your views on our emerging planning policy. Plans for Places...*after Blueprint*, can be viewed on line at [www.winchester.gov.uk/plans4places](http://www.winchester.gov.uk/plans4places) . To assist you to comment on the document we have created a series of consultation questions, the easiest and quickest way to access and complete these is online via the above web address. You may also download the questions and send them back to us via email ([LDF@winchester.gov.uk](mailto:LDF@winchester.gov.uk)) or post them to the address at the top of the page.

However you decide to respond, your comments need to be with us by 5pm on 8 August 2011. During the autumn, we will then prepare a revised Core Strategy, in anticipation of submitting it to Government for consideration in early 2012.

Yours sincerely

Steve Opacic,  
Head of Strategic Planning

To individuals

Your Ref:  
Our Ref: SO/eb  
Enq to: Steve Opacic  
Direct Line: 01962 848101  
Email: LDF@winchester.gov.uk

27 June 2011

Dear Sir / Madam

**'Plans for Places...after Blueprint' consultation**

We are writing to you because you have previously responded to consultation on the emerging Core Strategy and thought you may like to be kept informed of progress. Last year the Council undertook a consultation exercise called 'Blueprint' to explore with communities how their housing and development needs may change looking ahead twenty years. Winchester City Council has now considered the many and varied comments it received to Blueprint and has used these to set out draft planning strategies for the whole of the Winchester District in its new document published for consultation - 'Plans for Places...after Blueprint', which forms part of its emerging LDF Core Strategy.

Plans for Places...after Blueprint', does not include formal planning policy but highlights the many challenges facing the District and suggests a way forward looking ahead to 2031. It takes into account updated technical evidence and views submitted through Blueprint. In particular it uses revised population and housing projections to generate a new District wide housing requirement which is allocated across the District, focussing growth in the larger more urban areas, but acknowledging that many smaller rural settlements may also wish to be able to accommodate small scale appropriate development.

We would like your views on our emerging planning policy. Plans for Places...after Blueprint', can be viewed on line at [www.winchester.gov.uk/plans4places](http://www.winchester.gov.uk/plans4places) . To assist you to comment on the document we have created a series of consultation questions, the easiest and quickest way to access and complete these is online via the above web address. You may also download the questions and send them back to us via email ([LDF@winchester.gov.uk](mailto:LDF@winchester.gov.uk)) or post them to the address at the top of the page.

However you decide to respond, your comments need to be with us by 5pm on 8 August 2011. During the autumn, we will then prepare a revised Core Strategy, in anticipation of submitting it to Government for consideration in early 2012.

Yours faithfully

Steve Opacic,  
Head of Strategic Planning

# Appendix E03

## Response Form

## Plans for Places...after Blueprint

- Please use this form to tell us your views on [Plans for Places](#).
- Before commenting it is important that you take the opportunity to read [Plans for Places](#) as we have prepared a series of consultation questions about the contents of this document.

### How to make comments

1. Use the Council's on-line consultation form whenever possible, which is available at:

[www.winchester.gov.uk/plans4places](http://www.winchester.gov.uk/plans4places)

Using this electronic form will help us to analyse the responses.

If you are unable to use the electronic form, it is available to download and responses can be submitted by emailing [ldf@winchester.gov.uk](mailto:ldf@winchester.gov.uk) . You can also complete a copy of the form and post to:

Head of Strategic Planning,  
Winchester City Council  
City Offices  
Colebrook Street  
Winchester  
SO23 9LJ

2. Make sure you add your contact details in the boxes provided - anonymous comments will not be accepted.
3. Tell us clearly on the form which question you are responding to – this is important to help us take account of your comments through this consultation.
4. Complete a separate form for each question.
5. Make sure your comments are sent back to us by **5 pm on Monday 8 August 2011**. This is the closing date for all comments.

### Your contact details and privacy

**Important:** please note the following:

- Anonymous comments will not be accepted.
- Your comments will be available for people to read and we will be putting the responses (or a summary) on our website.
- Any information that you supply will be held in accordance with the Data Protection Act 1998. See the following website for more information: [www.winchester.gov.uk/councilanddemocracy](http://www.winchester.gov.uk/councilanddemocracy).

### What happens next

- All comments received will be considered and reported to the [Council's Cabinet \(Local Development Framework\) Committee](#), who will decide the content of the next stage of the Core Strategy.
- To be kept informed of what is happening, please sign up to the [LDF e-newsletter](#).

## Plans for Places...after Blueprint

This is the form for commenting on [Plans for Places](#). This form is divided into two parts. In Part 1 you should add your contact details; you only need to fill this part in once.

In Part 2 you can add your comments to each question. Please use a new Part 2 form for each question you answer.

### Part 1: Personal Details

Please complete this section in **BLOCK CAPITALS**

Name (including title)	
Organisation (if you are responding on behalf of an organisation)	
Address	
Postcode	
Telephone	
Email*	

**If you are acting as an agent**, please also give your details below

Contact Name	
Company (if applicable)	
Address	
Postcode	
Telephone	
Email*	

<b>Total Number of pages enclosed including this page:</b>	
------------------------------------------------------------	--

\*We aim to minimise the amount of paper printed and sent out. Therefore, where an email address is provided, future contact will be made electronically



# Part 2: Your Comments

Please complete this Part 2 form for every new question you respond to. Make sure you include your name or organisation on each form and that you have indicated the total number of pages you've enclosed in the box provided in Part 1. Please sign and date the form.

Your Name or Organisation		
Question Number		
1. First Part of question (for example do you agree?):	<b>Yes</b>	<b>No</b>
2. Answer to second part of question (for example 'If not, what changes do you suggest and why?')		
<i>Continue on a separate sheet if necessary</i>		
Date	Signature	

# Appendix E04

Public Notice June 2011

**Plans for Places...after Blueprint**  
**Winchester City Council Core Strategy**  
**(part of the Winchester District Development Framework)**

**Planning and Compulsory Purchase Act 2004 (as amended)**

Plans for Places sets out Winchester City Council's proposed strategic planning framework for the District, taking into account comments received to the Blueprint consultation held in autumn 2010, revised population and household projections and other evidence. It will inform the Core Strategy which is the first development plan document to be prepared under the Winchester District Development Framework and once adopted all subsequent documents within the District Development Framework must comply with it.

Consultation on Plans for Places commences on the **Monday 27 June 2011 and closes at 5pm on Monday 8 August 2011**. This is your opportunity to comment on the development strategy for the District, all the documents are on the Council's website [www.winchester.gov.uk/plans4places](http://www.winchester.gov.uk/plans4places). Here you can use the on-line consultation form to submit your comments about the whole document or just the areas you are interested in. Alternatively, you can make comments in writing or by email to the City Council at the following address:-

Head of Strategic Planning  
Winchester City Council  
City Offices  
Colebrook Street  
WINCHESTER  
SO23 9LJ

Email : [LDF@winchester.gov.uk](mailto:LDF@winchester.gov.uk)

Paper copies of the document can be inspected or purchased at Winchester City Council, City Offices, Winchester (price £5 plus p&p) tel. 01962 840 222. Alternatively you can view the document (subject to opening hours) at local libraries.

Your comments will be considered by the City Council along with other responses received, before proceeding to the next stage of the Core Strategy by the end of the year.

Steve Opacic  
Head of Strategic Planning, 29 June 2011

# Appendix E05

Press Release 27 June 2011

## Plans for Places... after Blueprint – Consultation launched

---

Winchester City Council is launching the next stage of consultation about what development we should plan for over the next 20 years. Following the Blueprint exercise, where communities from across the District told us how they wanted housing, employment and community facilities to be provided in their areas, Plans for Places is our response.

Plans for Places uses both community feedback and expert evidence (including new population and housing projections) to set out the best options for development to be set out in the Local Development Framework. The Council invites residents, businesses and any other interested parties to comment on the proposals in the document over a six week period from 27 June until 8 August.

The plan is split into three sections which reflect the characteristics of the District: the rural area including the market towns; the urban areas to the south; and Winchester town. There was much consensus in the rural areas and in the market towns about what these areas need and want for the future. In Winchester however, there was less agreement. There are two scenarios presented for Winchester Town, one if the Barton Farm planning appeal is allowed by the Secretary of State, and one if the appeal is dismissed. The plan has to address both scenarios, but recognises that even if this current application is refused Barton Farm might still need to be considered as a possible area for development, depending on the Secretary of State's conclusions.

Cllr George Beckett, Leader of Winchester City Council said, "We were really pleased with the reception there was for the Blueprint consultation and the enthusiasm of residents, businesses and community organisations in planning the future of their areas. It demonstrates our commitment to localism but doesn't ignore the fact that we can't simply say no to development if we want the jobs, infrastructure and housing that successful communities will need in future years. We hope that people will take the time to comment on this document and help us ensure a positive future for Winchester District."

The document can be viewed on our website [www.winchester.gov.uk/plans4places](http://www.winchester.gov.uk/plans4places) and we have created a series of consultation questions for completion. Alternatively a copy can be requested from the Strategic Planning team on 01962 848 101 or 01962 848 278 or email [ldf@winchester.gov.uk](mailto:ldf@winchester.gov.uk)

Date published: 27/06/2011

# Appendix E06

Media coverage

## Appendix E06: Media Coverage

The Winchester and Mid Hants Observer 29 June 2011

Tel: 01962 859558 HAMPSHIRE MEDIA 29/06/2011 PAGE 3

### Plans for Places... after Blueprint – Consultation launched

Winchester City Council is launching the next stage of consultation about what development we should plan for over the next 20 years. Following the Blueprint exercise, where communities from across the District told us how they wanted housing, employment and community facilities to be provided in their areas, Plans for Places is our response.

Plans for Places uses both community feedback and expert evidence (including new population and housing projections) to set out the best options for development to be set out in the Local Development Framework. The Council invites residents, businesses and any other interested parties to comment on the proposals in the document over a six week period from 27 June until 8 August.

The plan is split into three sections which reflect the characteristics of the District: the rural area including the market towns; the urban areas to the south; and Winchester town. There was much consensus in the rural areas and in the market towns about what these areas need and want for the future. In Winchester however, there was less agreement. There are two scenarios presented for Winchester Town, one if the Barton Farm planning appeal is allowed by the Secretary of State, and one if the appeal is dismissed. The plan has to address both scenarios, but recognises that even if this current application is refused Barton Farm might still need to be considered as a possible area for development, depending on the Secretary of State's conclusions.

Cllr George Beckett, Leader of Winchester City Council said, "We were really pleased with the reception there was for the Blueprint consultation and the enthusiasm of residents, businesses and community organisations in planning the future of their areas. It demonstrates our commitment to localism but doesn't ignore the fact that we can't simply say no to development if we want the jobs, infrastructure and housing that successful communities will need in future years. We hope that people will take the time to comment on this document and help us ensure a positive future for Winchester District."

The document can be viewed on our website [www.winchester.gov.uk](http://www.winchester.gov.uk) and we have created a series of consultation questions for completion. Alternatively a copy can be requested from the Strategic Planning team on 01962 848 101 or 01962 848 278 or email [ldf@winchester.gov.uk](mailto:ldf@winchester.gov.uk)



### Enchanted Garden: Flower Fairies & Dark Tales

2 July - 2 October 2011  
A summer of magic, mystery and discovery  
Fabulous family trail  
Unique exhibition  
Special events

Mottisfont, Nr Romsey, Hampshire SO51 0LP  
01794 340757  
[www.nationaltrust.org.uk/mottisfont](http://www.nationaltrust.org.uk/mottisfont)  
Flower Fairies © The Estate of Cicely Mary Barker, 2011

National Trust  
Time well spent

Registered charity no. 205846

The News 1 July 2011

free hospital beds.'

### Have a say on growth plans

PEOPLE are being asked to give their opinions on a document setting out how a district will grow over the next 20 years.

Winchester City Council, which includes Bishop's Waltham, Denmead and Wickham, is launching its second stage of public consultation, known as Plans for Places.

This stage uses both community feedback and expert evidence to set out the best options for development. Comments on the proposals need to be made by August 8.

Cllr George Beckett, leader of the council, said: 'We hope that people will take the time to comment on this document and help us ensure a positive future for Winchester district.'

It is at [winchester.gov.uk](http://winchester.gov.uk) or a copy can be requested on (01962) 848101.

The News 1/7/11

# Appendix E07

## Plans for Places Poster



# Plans for Places *after Blueprint* Consultation

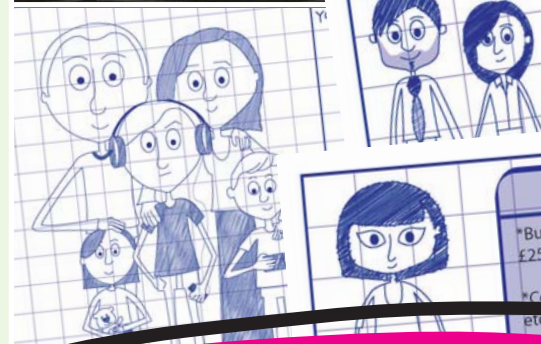
Let us have your comments  
on our revised long term  
planning strategy for the  
Winchester District.

View the document at  
[www.winchester.gov.uk/plans4places](http://www.winchester.gov.uk/plans4places)

You can comment in a number of ways :

1. Complete the consultation questions on-line
2. Download the consultation questions and email them to us at [LDF@winchester.gov.uk](mailto:LDF@winchester.gov.uk)
3. Write to us at **Strategic Planning Team,  
Winchester City Council, Colebrook Street,  
Winchester, SO23 9LJ Tel 01962 840 222**

To take your comments into account these must be  
with us by **Monday 8 August 2011**



# Appendix E08

Live for the Future e-newsletters

June 2011



June 2011 - Issue 21

## LDF Bulletin

---

### *Plans for Places... after Blueprint*

Following on from our very successful Blueprint consultation in 2010, we have prepared our response to it. We have taken into account all the many, varied and well structured comments we received through Blueprint, together with updated evidence and revised housing and population projections. The resulting document: *Plans for Places...after Blueprint*, will be considered by the Council's Cabinet (LDF) Committee on 6 June, for approval for consultation during June/July.

The committee report and draft *Plans for Places* (together with the Housing Technical Paper which assesses a range of housing/population projections for the District up to 2031) can be viewed on our website. [Plans for Places Committee Report](#)

*Plans for Places* does not include all the detailed spatial planning policies that will be included in the next full version of the Core Strategy. These will be developed alongside policies on key topics, which are likely to cover similar matters to those set out in the 2009 Preferred Option, revised and updated as necessary.

Consultation arrangements are in the process of being organised and a further newsletter will be published when these have been confirmed.

### **Revised Local Development Scheme**

The Local Development Scheme sets out the programme for producing the Local Development Framework and was last published in 2009. Given all the changes that have happened in the interim, with the introduction of Localism and Government's plans to revoke regional spatial strategies, it has been necessary to update it.

The revised scheme sets out the timescale for the preparation of the Core Strategy and Development Management and Allocations DPD, together with a Community

Infrastructure Levy charging schedule. The details can be viewed on our website. [Revised Local Development Scheme Details](#)

## 2011 Strategic Housing Land Availability Assessment (SHLAA) Update

The Strategic Housing Land Availability Assessment (SHLAA) considers how much housing land could potentially come forward within the District over the next 15 years. It is an important part of the evidence base for the Local Development Framework as it identifies housing sites which are potentially developable and deliverable in the District and needs to be updated regularly.

The SHLAA is not a document which allocates sites for development and nor does the identification of a site within the SHLAA guarantee that planning permission will be granted on that site.

The deadline for returning site submission forms to us to consider in the 2011 SHLAA is 01 July 2011.

If you want to submit a site, please use the site submission form which can be found on this webpage: <http://www.winchester.gov.uk/shlaa> or email [ldf@winchester.gov.uk](mailto:ldf@winchester.gov.uk)

### Strategic Planning Team

Winchester City Council  
City Offices  
Colebrook Street  
Winchester  
Hampshire  
SO23 9LJ

Tel: 01962 840 222

[ldf@winchester.gov.uk](mailto:ldf@winchester.gov.uk)

[www.winchester.gov.uk/liveforthefuture](http://www.winchester.gov.uk/liveforthefuture)

All rights reserved. All content ©2010 Winchester Council. You may [unsubscribe](#) from this email at anytime. Alternatively, you might want to [forward this email](#) on to a friend if you think it may be of interest to them.



# Live for the Future...

June 2011 - Issue 22

## LDF Bulletin

---

### *Plans for Places...after Blueprint* published for Consultation

*Plans for Places...after Blueprint*, is the Council's response to the many and varied comments we received to the Blueprint consultation held in 2010. It specifically sets out draft planning strategies for the whole of the Winchester District, taking into account feedback from Blueprint and revised and up-dated technical evidence, included revised population and housing projections. These strategies include the amount of new development that needs to be planned for and where this will happen.

*Plans for Places...after Blueprint*, can be viewed and downloaded via the following link - [www.winchester.gov.uk/plans4places](http://www.winchester.gov.uk/plans4places)

Copies of the document will also be available to view at the Council Offices and in libraries.

The consultation starts on Monday 27 June and comments need to be returned to us by 5pm on Monday 8 August 2011.

The easiest way to submit your comments to us, is to use the online form (accessed via the above weblink), this is simple to use and is automatically returned to us – you will then receive an email confirmation including a copy of your submission.

Alternatively the consultation questions are available as a PDF or word version and these can be downloaded and returned to us via email [LDF@winchester.gov.uk](mailto:LDF@winchester.gov.uk) or posting to: LDF Team, Winchester City Council, Colebrook Street, Winchester, SO23 9LJ.

## Customer Service Excellence Accreditation – Strategic Planning Team

As part of the Council's strive to offer improved customer services, each team is being assessed under the Governments Customer Service Excellence Standard. The Strategic Planning Team would appreciate your help with this and have created a short questionnaire based on how well you think we perform when we communicate with you and how well we respond to your specific enquiries – the questionnaire will take less than 10 minutes to complete and can be accessed at [http://www.surveymonkey.com/s/Strategic\\_Planning](http://www.surveymonkey.com/s/Strategic_Planning)

## Blueprint responses - dealing with the 'non-planning' issues

The Blueprint consultation exercise generated comments on a wide range of issues. Many of these will be used to inform the LDF documents that follow, but some of the issues relate to 'non-planning' matters.

We expected this to happen and recognise the value of this information in helping to make our communities places in which people want to live. All of the comments are important and must not be overlooked, even where the Council has no direct part to play. We have identified and summarised all of the issues and will shortly provide each parish council with a summary for their area along with suggestions as to the appropriate mechanism for addressing the 'non-planning' issues. In the meantime if you need any further details on this matter please contact our Community Planning Team : [slincoln@winchester.gov.uk](mailto:slincoln@winchester.gov.uk)

### Strategic Planning Team

Winchester City Council  
City Offices  
Colebrook Street  
Winchester  
Hampshire  
SO23 9LJ

Tel: 01962 840 222

[ldf@winchester.gov.uk](mailto:ldf@winchester.gov.uk)

[www.winchester.gov.uk/liveforthefuture](http://www.winchester.gov.uk/liveforthefuture)

All rights reserved. All content ©2010 Winchester Council. You may [unsubscribe](#) from this email at anytime. Alternatively, you might want to [forward this email](#) on to a friend if you think it may be of interest to them.



# Live for the Future...

July 2011 - Issue 23

## LDF Bulletin

---

### REMINDER: Consultation on '*Plans for Places*' closes on 8 August 2011

*Plans for Places...after Blueprint* is the Council's response to the many and varied comments we received to the Blueprint consultation held in 2010. It specifically sets out draft planning strategies for the whole of the Winchester District, taking into account feedback from Blueprint and revised and up-dated technical evidence, included revised population and housing projections. These strategies include the amount of new development that needs to be planned for and where this will happen.

*Plans for Places...after Blueprint*, can be viewed and downloaded via the following link [www.winchester.gov.uk/plans4places](http://www.winchester.gov.uk/plans4places). Copies of the document can be viewed at the Council Offices and in libraries. **Comments need to be returned by 5pm on Monday 8 August 2011.**

The easiest way to submit your comments is to use the online form (accessed via the above weblink), this is simple to use and is automatically returned to us – you will also receive an email confirmation including a copy of your submission. Alternatively, the consultation questions are available as a PDF or word version and these can be [downloaded](#) and returned via email [LDF@winchester.gov.uk](mailto:LDF@winchester.gov.uk) or posting to the LDF Team, Winchester City Council, Colebrook Street, Winchester, SO23 9LJ.

### Customer Service Excellence Accreditation – Strategic Planning Team

As part of the Council's strive to offer improved customer services, each team is being assessed under the Governments Customer Service Excellence Standard. The Strategic Planning Team would appreciate your help with this and have created a short questionnaire based on how well you think we perform when we

communicate with you and how well we respond to your specific enquiries. The questionnaire will take less than 10 minutes to complete and can be accessed at [http://www.surveymonkey.com/s/Strategic\\_Planning](http://www.surveymonkey.com/s/Strategic_Planning)

## Compton and Shawford Village Design Statement consultation

Winchester City Council is consulting on a Village Design Statement (VDS) produced for Compton and Shawford Parish. The consultation ends at 5.00pm on Friday 26th August 2011. When adopted, the VDS will provide design guidance for development in Compton and Shawford and will supplement the Winchester District Local Plan Review (WDLPR 2006).

Follow the following link to find out more about this consultation and to view a copy of the document: [Compton and Shawford Village Design Statement Consultation](#)

**Strategic Planning Team**

Winchester City Council  
City Offices  
Colebrook Street  
Winchester  
Hampshire  
SO23 9LJ

Tel: 01962 840 222

[ldf@winchester.gov.uk](mailto:ldf@winchester.gov.uk)

[www.winchester.gov.uk/liveforthefuture](http://www.winchester.gov.uk/liveforthefuture)

All rights reserved. All content ©2010 Winchester Council. You may [unsubscribe](#) from this email at anytime. Alternatively, you might want to [forward this email](#) on to a friend if you think it may be of interest to them.



## Appendix E09

Media Article on  
'Where now for Winchester' public  
discussion.

## Democracy

You are here: Home > Council and Democracy > Where now for Winchester? – A public discussion

Choose another section

Home

Council and Democracy

- Benefits
- Best Value
- Byelaws
- Committee Reports, Minutes and Agendas
- Consultations
- Corporate Complaints
- Council Budget and Spending
- Council Departments
- Council Performance
- Council Tax
- Data Protection and Freedom of Information
- Decision Making
- Democracy and Elections
- Elected Representatives
- Emergencies
- Equality and Diversity
- Financial Documents
- Grants
- Hampshire Senate
- Opportunities to work with the Council
- Pay Online
- Petitions
- Public Notices
- Statistics and Census

# Where now for Winchester? – A public discussion

On Thursday 27 October Winchester City Council will host a public discussion on how the new Local Plan should meet Winchester's need for housing and economic development over the next 20 years.

The Question Time style event will be held at the Theatre Royal Winchester with a panel of Winchester community leaders answering questions from members of the public and local groups about development in City. The debate will be chaired by local businessman and former newscaster, Khalid Aziz who will also ensure that the range of questions to be asked is a fair reflection of those submitted.

Confirmed panel members include; Cllr George Beckett, Conservative Leader of Winchester City Council; Cllr Brian Collin, Liberal Democrat representative and Chair of the Town Forum; as well as a representative from the Labour Party and a community representative still to be confirmed.

Cllr George Beckett commented, "I have said many times that we face very difficult decisions as a community about providing a sustainable future and we cannot put them off any longer. The issues and views about the future of Winchester were widely debated in the Blueprint exercise and we now have to decide how to respond in the best interests of our communities, local economy and historic environment."

The event starts at 7.30pm and free tickets are available on a first come first served basis from the Theatre Royal box office in advance.

To ensure that all the relevant topics are covered and not duplicated in the time available questions should be submitted in advance and only a limited number of questions will be put to the panel.

To register your question, contact [cveal@winchester.gov.uk](mailto:cveal@winchester.gov.uk) or call 01962 848 438 by 25 October.

Date published: 18/10/2011

### Contact Us

Customer Service Centre  
Winchester City Council  
City Offices  
Colebrook Street  
Winchester  
Hampshire  
SO23 9LJ

Tel: 01962 840 222

[Contact Us Online](#)



### Search Press Releases:

Keywords:

I am looking for Press Release

during:

# Appendix E10

## Follow Up Meetings with Parishes

## **'Plans for Places' Follow-up Meeting**

**19 October 2011, City Offices, Winchester**

### **MEETING NOTE**

WCC invited representatives of the largest rural settlements in the District to two meetings to follow-up their comments on 'Plans for Places'. The first meeting was at 1.00pm for representatives of Bishops Waltham and New Alresford, and the second was at 3.00pm for representatives of Colden Common, Denmead, Kings Worthy, Swanmore, Waltham Chase and Wickham.

#### Attendance:

Meeting 1: Dorothy Quiney (B Waltham Parish Councillor)  
Robert Shields (B Waltham Parish Councillor)  
Terry Wilson (B Waltham Parish Councillor)  
Lindsey Edge (B Waltham Parish Clerk)  
Roy Gentry (N Alresford Parish Councillor)  
Barbara Jeffs (N Alresford Parish Councillor)  
Natalie Carpenter (N Alresford Parish Councillor)  
Stevie Kavanagh (N Alresford Parish Clerk)  
Rob Humby (WCC Portfolio Holder)  
Steve Opacic (WCC Strategic Planning)

Meeting 2: Cecily Sutton (C Common Parish Councillor)  
Val Evans (C Common Parish Councillor)  
Neil Lander-Brinkley (Denmead Parish Councillor)  
Felicity Hull (Denmead Parish Councillor)  
Ian Gordon (K Worthy Parish Councillor)  
Michael Westwell (Swanmore Parish Councillor)  
Chris Newhouse (Swanmore Parish Councillor)  
Alan Cox (Shedfield Parish Councillor)  
Yvonne Wheadon (Shedfield Parish Clerk)  
Angela Clear (Wickham Parish Councillor)  
Nicki Oliver (Wickham Parish Clerk)  
Rob Humby (WCC Portfolio Holder)  
Steve Opacic (WCC Strategic Planning)

Although two separate meetings were held, very similar points were raised at both. Therefore this note aims to provide a brief summary of the issues raised, regardless of which meeting they were raised at. As the meetings were informal the comments are not attributed to particular people or Parish Councils.

SO thanked everyone for attending and explained that the purpose of the meetings was to consult the Parishes informally on the policy being drafted for the next stage of the Core Strategy. The aim was for the Core Strategy to be approved by the City Council for publication by the end of 2011, but the subsequent consultation would just be concerned with 'soundness' issues. This was therefore an opportunity for the Parishes to check that the emerging policy covered the main issues and to suggest wording changes to make it more acceptable.

SO explained the further work that had been done on overall housing requirements and how these were spilt between the 3 spatial areas. This had confirmed that the

overall requirement for 11000 dwellings over 20 years was justified and the Barton Farm inquiry Inspector had come to the same conclusion independently. The majority of housing requirements would be met in the most sustainable locations of Winchester, West of Waterlooville and Whiteley, with only the 'residual' 1500 allocated to the Market Towns and Rural Area. The reason this figure did not tally with the sum of the rural settlements requirements was because these had been developed from the 'bottom up', based on needs identified through Blueprint, whereas the 1500 figure was the residual of a 'top down' assessment.

There were questions about whether the suggested housing targets for particular settlements could be adjusted to take account of other major developments nearby, provision in other villages, or 'over-provision' in other market towns. SO explained that the targets were based on the needs of each town/village and the principle that was being followed was that each village should meet its own needs. He clarified that the targets were for settlements, not Parishes. There was a suggestion that it was not clear enough that each area should meet its own needs and SO agreed to look at whether this could be made clearer.

#### Criterion 1:

There was much discussion of the housing target for the various settlements, with some accepting the figure and others suggesting it was too high. This was particularly because of concerns that there was inadequate capacity without releasing greenfield sites. SO explained that none of the settlements was so constrained that a ban on greenfield site development could be justified. In general the upper end of what some settlements may find acceptable generally corresponded with the lower end of the range proposed in the policy.

The 'brownfield sites first' emphasis in criterion 1 was welcomed but there were suggestions that the wording should set a stricter test for greenfield development. Using words like 'may be allocated' and 'particularly where' should be tightened up – SO to look at this. There was also concern about reference to 'infilling' which may imply backland development – SO to look at referring to 'development or redevelopment' instead.

#### Criterion 2:

There was general support for maintaining the shopping, service, employment, etc role of the towns/villages, with the suggestion of replacing 'strengthen' with 'improve' – SO to look at this change. There was some support for the references to improving the balance between housing and employment and a suggestion that the importance of the economy to sustainability should be emphasised in the explanatory text – SO to consider.

#### Criterion 3:

There was general support for the intention of this criterion but a suggestion that the wording could be improved to make its intention clearer – SO to look at re-wording.

#### Criterion 4:

There was general support for this criterion. It was suggested that it should refer to 'conserving' identity, character, etc, rather than 'respecting'. It was also suggested that it should refer to Neighbourhood Plans – SO to consider these suggestions.

SO explained that the Core Strategy would deal with strategic matters, such as overall development quantity and location. Allocations in the market towns and villages would be made either through the City Council's Development Management and Allocations DPD, or in Neighbourhood Plans. There was reference to the pilot

on Neighbourhood Planning that would be carried out in Denmead and how this could be used to inform both the DPD and other Neighbourhood Plans.

At the end of the discussion it was agreed that the criteria were applicable to the larger settlements (B Waltham and N Alresford) as well as the smaller ones, so there was no need for two separate policies. SO and RH thanked everyone for their attendance and felt that they would be able to amend the draft policy to take on board most of the concerns.

S Opacic 21.10.11