



Meeting	Licensing Sub-Committee
Date and Time	Monday, 25th November, 2024 at 11.00 am.
Venue	Walton Suite, Guildhall, Winchester and streamed live on YouTube at www.youtube.com/winchestercc

S U P P L E M E N T A R Y A G E N D A 1

The attached document, relating to the agenda item below was not available at the time the agenda was published.

Agenda Item.

3. Application for a Review of Premises Licence - Boomtown Fair, Matterley Bowl, Alresford Road, Winchester (LR588) (less exempt appendices) (Pages 3 - 36)

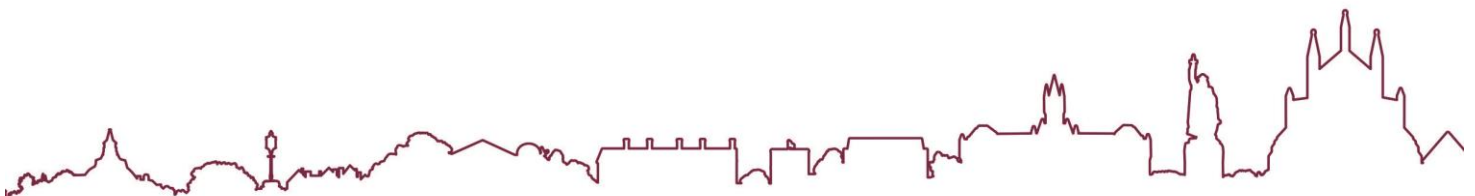
(LR588 – Appendix 6a – Evidence submitted by Boomtown)
5. Application for a Review of Premises Licence - Boomtown Fair, Matterley Bowl, Alresford Road, Winchester (LR588 - Exempt Appendices) (Pages 37 - 116)

(LR588 - Exempt Appendix 6b – Exempt Evidence submitted by Boomtown)

City Offices
Colebrook Street
Winchester
SO23 9LJ

Laura Taylor
Chief Executive

All of the Council's publicly available agendas, reports and minutes are available to view and download from the Council's [Website](#) and are also open to inspection at the offices of the council. As part of our drive to minimise our use of paper we do not provide paper copies of the full agenda pack at meetings. We do however, provide a number of copies of the agenda front sheet at the meeting which contains the QR Code opposite. Scanning this code enables members of the public to easily access all of the meeting papers on their own electronic device. Please hold your device's camera or QR code App over the QR Code so that it's clearly visible within your screen and you will be redirected to the agenda pack.



20 November 2024

Agenda Contact: Claire Buchanan, Senior Democratic Services Officer
Tel: 01962 848 438 Email: cbuchanan@winchester.gov.uk



38 Briton Hill Road, South Croydon, Surrey, CR2 0JL
 ✉ info@f1acoustics.com ☎ +44 1273 526569 🌐 f1acoustics.com

BOOMTOWN LICENCE REVIEW 2024

COMMENTARY ON REPRESENTATIONS REGARDING NOISE

Project	Boomtown Licence Review 2024
To	Matthew Phipps, Partner, Head of Licensing England and Wales for TLT LLP
From	Robert Miller, Director, F1 Acoustics Company Limited
Date	18 November 2024
Reference	2016/RepsCommentaryNoise/Rev1

1 INTRODUCTION

F1 Acoustics Company Limited has been appointed by Boomtown Festival UK Ltd to provide commentary, with respect to noise, on the representations received from members of the public with regard to the Premises Licence Review being carried out by Winchester City Council in November 2024.

2 COMMENTARY ON REPRESENTATIONS

Table 2.1 shows the details of the representation received, an extract of any comments on noise and my commentary.

Table 2.1: Representations and Commentary

Rep ID	Extract of Representation Re Noise	F1 Acoustics Commentary
1. Sue Hardman 3 Raebarn Close, SO24 0QE	I would also like to make a representation about the Prevention of Public Nuisance. The amplified music noise from Boomtown travels for miles in all directions. It is unreasonable to allow music to continue until 4am in the morning just because the event is held in the countryside. This would never be allowed in an urban area and it is unreasonable to expect rural residents to put up with it. It is very difficult for the event organisers to control how far the sound travels as prevailing weather makes such a difference. The noise is audible within people's houses through closed double-glazed windows. The only way to guarantee that sound won't be audible in people's homes is if it has been turned off. My understanding is that comparable events such as Glastonbury do not allow music to be played after	The wind direction and speed does have a significant influence on where the music is audible in the surrounding area. We monitor all areas surrounding the event and manage the music noise level (MNL) to WCC limits set in the Premises Licence based on the loudest area. MP6 this year was in Markall Close, adjacent to Raebarn Close, no exceedances of the MNL limit recorded here in 2024. Some music was audible on Wednesday evening and rectified promptly. Glastonbury operates to the following times with significant large stages operating: Wed – 00:00 Thu – 03:00 Fri & Sat – 06:00 Sun – 05:00

	<p>midnight. If the licence is agreed the noise conditions must reflect those that would be agreed for an open air concert in an urban area. I think this would be a reasonable balance between the commercial requirements of the organisers and the rights of local residents to be able to enjoy the tranquillity of living in a National Park.</p>	<p>The two largest outdoor stages at Boomtown, Grand Central and Origin, operate a staggered closing on Friday and Saturday of 01:00 and 03:00, respectively.</p>
<p>2. Michael J Beer 1 Hockley Cottages Cheriton Hampshire SO24 0NU</p>	<p>I would also like to make a representation about another of the Licensing Objectives – the Prevention of Public Nuisance. The amplified music noise from Boomtown travels for miles in all directions. On Wednesdays it is supposed to be inaudible. On Thursdays and Sundays it is supposed to finish at midnight. On Fridays and Saturdays it is allowed to continue until 4.00 am the next morning which I think is unreasonable as it causes nuisance to local residents, including myself when I am indoors trying to sleep. If the licence is not revoked, please can it be amended so that amplified music is not allowed after 11.00 pm or, at worst, midnight on all nights? I think this would be a reasonable balance between the commercial requirements of the organisers and the rights of local residents to be able to enjoy the tranquillity of living in a National Park</p> <p>...</p> <p>I do not consider that the Boomtown music festival does not promote the Prevention of Public Nuisance, which is one of the four licensing objectives? In particular, the low frequency bass noise travels miles from its source and it causes me and my wife considerable nuisance as it continues until 4.00 am on two nights and until midnight on two other nights. Living in a part of the South Downs National Park which</p>	<p>The wind direction and speed does have a significant influence on where the music is audible in the surrounding area. We monitor all areas surrounding the event and manage the MNL to WCC limits set in the Premises Licence based on the loudest area.</p> <p>MP6 and MP7 are the closest monitoring locations to this complaint and no exceedances of the MNL limit recorded here in 2024. Including a complaint received on Saturday night (Sunday morning) at 02:41 and investigated.</p>

	<p>enjoys very low ambient noise levels during the night at all other times of the year this is extremely annoying and I would like to request that, if the licence is allowed to continue, it should be amended such that amplified music ceases at either 11.00 pm or midnight on all nights.</p>	
<p>3. Cheriton Parish Council</p>	<p>...the parish council requests that it takes this opportunity (the first since 2019) to curtail the level of disturbance to achieve the licensing objective of the Prevention of Public Nuisance. Noise nuisance has been caused to residents in our parish during Boomtown music festivals for several years by amplified live and recorded music. This is allowed by the current premises licence to take place until midnight on Thursday and Sunday but, worse, it is allowed until 4.00 am on Friday night/Saturday morning and on Saturday night/Sunday morning. Residents in their own homes with all windows closed and the benefit of double glazing have been prevented from getting to sleep or have even been woken up during the night, particularly by low frequency bass noise which travels for miles.</p> <p>[The representation goes on to discuss noise monitoring they commissioned this year and about tranquillity.]</p>	<p>The wind direction and speed does have a significant influence on where the music is audible in the surrounding area. We monitor all areas surrounding the event and manage the MNL to WCC limits set in the Premises Licence based on the loudest area.</p> <p>MP6 (Cheriton) this year was in Markall Close, no exceedances of the MNL limit recorded here in 2024. Some music was audible on Wednesday evening but rectified to the satisfaction of WCC promptly.</p> <p>I have not seen the report mentioned and therefore cannot comment on the sound level data being referred to. The concept they discuss of the perception of the sound level (L_{Ap}) doubling every 10 dB is correct. However, the context or statistical significance of the 18 dB referred to is not explained. Is it a 90th percentile (L_{AF90,T})? Energetical average over a time period (L_{Aeq,T})? Or minimum (L_{AFmin,T})? Did it occur regularly or was it once a night? Without further information it is not possible to know how contextually relevant the sound level presented is.</p> <p>Tranquillity is not just about noise levels but many other factors including character and context, it also includes visual metrics. Yes, the area has a low background sound level but we are operating to MNL limits set by WCC that should protect the majority of local residents to excessive noise disturbance (this does not mean inaudibility in the absolute sense).</p>

<p>4. Elizabeth Anne Newson Fir Tree Cottage Bramdean SO24 0JW</p>	<p>I wish to make the following points regarding the Prevention of Public Nuisance:</p> <ul style="list-style-type: none"> • residents are bothered by the continuous deep thud of the bass music until 4 a.m. on two nights of the Festival; this is totally unacceptable. I live approximately six miles from the site and I can hear the thudding of the music quite distinctly. Base line readings of this blessedly peaceful environment, particularly night time readings, should be taken professionally with microphones positioned at the correct height and away from undulating land that may give a false reading. • The level of sound at nighttime in this area is very, very low; almost silent. To then have deep base music thudding until the early hours is an absolute desecration of the tranquillity of the SDNP and constitutes a public nuisance. 	<p>We monitor all areas surrounding the event and manage the MNL to WCC limits set in the Premises Licence based on the loudest area.</p> <p>MP6 (Cheriton) is the closest monitoring position to Bramdean, no exceedances of the MNL limit were recorded here in 2024.</p> <p>Yes, the area has a low background sound level but we are operating to MNL limits set by WCC that should protect the majority of local residents to excessive noise disturbance (this does not mean inaudibility in the absolute sense).</p>
<p>5. David Pain Godwins Cottage Cheriton Alresford SO24 0PY</p>	<p>I live in an area of intermediate to high tranquillity according to the Tranquillity Scores Map in this Local Plan and the ambient noise level at bedroom height at the rear of my house has been professionally measured recently at 18dB after 11.00 pm at night.</p> <p>Therefore, it is particularly quiet after 11.00 pm where I live – in fact, almost silent apart from the occasional hooting by owls and the chiming of the church clock. However, during the Boomtown festival the music noise is supposed to be inaudible on the Wednesday, continues until midnight on the Thursday and Sunday, and continues until 4.00 am on the Friday and Saturday nights. This causes nuisance to me as, even with my double-glazed bedroom windows shut, I am either prevented from</p>	<p>I have not seen the report mentioned and therefore cannot comment on the sound level data being referred to. The concept they discuss of the perception of the sound level (L_{Ap}) doubling every 10 dB is correct. However, the context or statistical significance of the 18 dB referred to is not explained. Is it a 90th percentile ($L_{AF90,T}$)? Energetical average over a time period ($L_{Aeq,T}$)? Or minimum ($L_{AFmin,T}$)? Did it occur regularly or was it once a night? Without further information it is not possible to know how contextually relevant the sound level presented is.</p> <p>MP6 (Cheriton) this year was in Markall Close, no exceedances of the MNL limit recorded here in 2024. Some music was audible on Wednesday evening but rectified to the satisfaction of WCC promptly.</p>

	<p>getting to sleep or even awoken during the night particularly by the low-frequency bass noise. I do not consider that the noise should be permitted to continue so late at night. One of my grand-daughters attended the Glastonbury Festival this year and the main stages closed at midnight in deference to local residents and that location is not even in a National Park! I can see no reason why residents in the rural parts of Winchester District should be expected to suffer noise nuisance so late at night as this undermines the Licensing Objective “Prevention of Public Nuisance”. If the licence is allowed to continue I request that the noise conditions are amended so that amplified live and recorded music ceases at either 11.00 pm or midnight on all nights.</p>	<p>Glastonbury operates to the following times with significant large stages operating (we work at Glastonbury): Wed – 00:00 Thu – 03:00 Fri & Sat – 06:00 Sun – 05:00</p> <p>The two largest outdoor stages at Boomtown, Grand Central and Origin, operate a staggered closing on Friday and Saturday of 01:00 and 03:00, respectively.</p>
<p>6. David Templeman Turnpike Cottage Hinton Ampner SO24 0JT</p>	<p>I have enjoyed the dark skies, peace and tranquillity of our National Park and its unique flora and fauna with its very low ambient noise levels during those dark night except when noisy events are held at Cheesefoot Head. The Boomtown music festival in particular is one such event which does not promote the Prevention of Public Nuisance: one of the four licensing objectives. Take the low frequency bass noise which travels miles from its source and causes both me and my wife considerable nuisance as it continues until 4.00 am on two nights and until midnight on two other nights. The current situation is both intolerable and very annoying and I most urgently urge that, if the licence is allowed to continue, it should be amended such that amplified music ceases at either 11.00 pm or midnight on all nights. It must be continuously measured and recorded in my direct vicinity as well as nearby in Bramdean by calibrated instruments, by qualified</p>	<p>MP6 (Cheriton) is the closest monitoring position to Bramdean, no exceedances of the MNL limit were recorded here in 2024.</p> <p>In 2024 we did carry out investigative noise monitoring in Hinton Ampner to try to establish if there was a significant difference to the MNL measured in Cheriton as requested by a resident. The findings were (put simply) that there was a variation in noise levels at different times, as would be expected along slightly different compass bearings from the site with variation in wind speed and direction but the MNL were not significantly higher in Hinton Ampner compared to the highest MNL measured in Cheriton.</p> <p>Further noise monitoring in the Hinton Ampner and Bramdean direction is being considered for future years.</p> <p>We use calibrated sound level measurement instrumentation, we are qualified independent experts and a</p>

	<p>independent experts who determine an agreed baseline and whose resources and expenses are fully funded by Boomtown.</p>	<p>WCC noise team also take measurements during the event. Yes, the area has a low background sound level but we are operating to MNL limits set by WCC that should protect the majority of local residents to excessive noise disturbance (this does not mean inaudibility in the absolute sense).</p>
<p>7. John Silvester Green Pastures Alresford Road Winchester SO21 1HL</p>	<p>I would also like to make several representations about another of the Licensing Objectives, namely the Prevention of Public Nuisance. Firstly, noise. A National Park is supposed to be a place of peace and tranquillity. On the Wednesday the amplified music is supposed to be inaudible at the perimeter of the site, but isn't. On the Thursday and Sunday it is supposed to stop at midnight but on the Friday and Saturday it is allowed to go on until 4 am. This is wholly unreasonable and a nuisance to local residents, as it prevents sleep, even with all windows closed, not ideal on a hot summer night. If the licence is not revoked, I request that it be amended so that amplified music ceases at 11 pm on all nights. Since it starts at 10 am this still allows 13 hours of music each day, which ought to be enough to satisfy the Boomtown customers.</p>	<p>On Wednesday the music should be inaudible at the monitoring positions which are further away than this property, hence why it is audible here. There is not a closer noise monitoring position along the A31 owing to the road traffic noise being dominant and it being difficult to take a representative measurement of the music noise. All monitoring positions are agreed with WCC.</p> <p>Yes, the area has a low background sound level but we are operating to MNL limits set by WCC that should protect the majority of local residents to excessive noise disturbance (this does not mean inaudibility in the absolute sense).</p>
<p>8. Graham Tarbuck Orchard View Kilmeston Road Cheriton SO24 0NJ</p>	<p>Noise from the Boomtown Music Festival is without doubt causing an annual public nuisance specifically on the two nights it continues after 11pm and even worse on the two nights it transmits until 4.00am. The bass noises are totally at odds with the proclaimed aspect of "Tranquillity" within the National Park which is given much prominence in SDNP literature and there appears a reluctance for anyone to take action - Licensing,</p>	<p>Yes, the area has a low background sound level but we are operating to MNL limits set by WCC that should protect the majority of local residents to excessive noise disturbance (this does not mean inaudibility in the absolute sense).</p>

	<p>SDNP, or Boomtown in the "prevention or Public nuisance" . The prevention of public nuisance is a corner-stone of Licensing and an ongoing cause for concern for National Park residents.</p>	
<p>9. Simon Scott Burnt Platt Cheriton Hampshire SO24 0PY</p>	<p>I would also like to make a representation about another of the Licensing Objectives – the Prevention of Public Nuisance. The amplified music noise from Boomtown travels for miles in all directions. On Wednesdays it is supposed to be inaudible. On Thursdays and Sundays it is supposed to finish at midnight. On Fridays and Saturdays it is allowed to continue until 4.00 am the next morning which I think is unreasonable as it causes nuisance to local residents. If the licence is not revoked, please can it be amended so that amplified music is not allowed after midnight on all nights? I think this would be a reasonable balance between the commercial requirements of the organisers and the rights of local residents to be able to enjoy the tranquillity of living in a National Park.</p>	<p>MP6 (Cheriton) this year was in Markall Close, no exceedances of the MNL limit recorded here in 2024. Some music was audible on Wednesday evening but rectified to the satisfaction of WCC promptly.</p> <p>The wind direction and speed does have a significant influence on where the music is audible in the surrounding area. We monitor all areas surrounding the event and manage the MNL to WCC limits set in the Premises Licence based on the loudest area.</p> <p>Yes, the area has a low background sound level but we are operating to MNL limits set by WCC that should protect the majority of local residents to excessive noise disturbance (this does not mean inaudibility in the absolute sense).</p>
<p>10. Martyn and Rosslyn Curwen-Bryant 4 Hockley Cottages Cheriton SO24 0NU</p>	<p>We would also like to make a representation about another of the Licensing Objectives – the Prevention of Public Nuisance. The amplified music noise from Boomtown travels for miles in all directions. On Wednesdays it is supposed to be inaudible. On Thursdays and Sundays it is supposed to finish at midnight. On Fridays and Saturdays it is allowed to continue until 4.00 am the next morning which we consider unreasonable as it causes nuisance to local residents, including ourselves. Even Glastonbury, a global event, closes its main stages at midnight. Our property is one of</p>	<p>The wind direction and speed does have a significant influence on where the music is audible in the surrounding area. We monitor all areas surrounding the event and manage the MNL to WCC limits set in the Premises Licence based on the loudest area.</p> <p>MP6 and MP7 are the closest monitoring locations to this representation and no exceedances of the MNL limit recorded here in 2024. Including a complaint received on Saturday night (Sunday morning) at 02:41 and investigated.</p>

	<p>the closest to the festival site. If the licence is not revoked, please can it be amended so that amplified live and recorded music is not permitted after 11.00 pm or, at worst, midnight on all nights? We consider this to offer a reasonable balance between the commercial requirements of the organisers and the rights of local residents to be able to enjoy the tranquillity of the South Downs National Park which rights, at present, appear to have been subordinated to those of Boomtown.</p>	<p>Glastonbury operates to the following times with significant large stages operating (we work at Glastonbury): Wed – 00:00 Thu – 03:00 Fri & Sat – 06:00 Sun – 05:00</p> <p>The two largest outdoor stages at Boomtown, Grand Central and Origin, operate a staggered closing on Friday and Saturday of 01:00 and 03:00, respectively.</p> <p>Yes, the area has a low background sound level but we are operating to MNL limits set by WCC that should protect the majority of local residents to excessive noise disturbance (this does not mean inaudibility in the absolute sense).</p>
<p>11. Michael Curtis Gastons Kilmeston nr. Alresford Hampshire SO24 ONL</p>	<p>I would like to make a representation about one of the Licensing Objectives – the Prevention of Public Nuisance. The amplified music noise from Boomtown travels for miles in all directions. On Wednesdays it is supposed to be inaudible. On Thursdays and Sundays it is supposed to finish at midnight. On Fridays and Saturdays it is allowed to continue until 4.00 am the next morning which I think is unreasonable as it causes nuisance to local residents, including myself when I am indoors trying to sleep. If the licence is not revoked, please can it be amended so that amplified music is not allowed after 11.00 pm or, at worst, midnight on all nights? I think this would be a reasonable balance between the commercial requirements of the organisers and the rights of local residents to be able to enjoy the tranquillity of living in a National Park.</p>	<p>The wind direction and speed does have a significant influence on where the music is audible in the surrounding area. We monitor all areas surrounding the event and manage the MNL to WCC limits set in the Premises Licence based on the loudest area.</p> <p>MP6 and MP7 are the closest monitoring locations to Kilmeston and no exceedances of the MNL limit were recorded here in 2024.</p> <p>Yes, the area has a low background sound level but we are operating to MNL limits set by WCC that should protect the majority of local residents to excessive noise disturbance (this does not mean inaudibility in the absolute sense).</p>

<p>12. Yew Tree Farmhouse Beauworth Near Alresford Hants SO24 0NZ</p>	<p>During the performance the public nuisance is the nighttime noise.</p>	<p>We monitor all areas surrounding the event and manage the MNL to WCC limits set in the Premises Licence based on the loudest area.</p> <p>MP6 and MP7 are the closest monitoring locations to Beauworth and no exceedances of the MNL limit were recorded here in 2024.</p>
<p>13. Frances Warwick Meadow Cottage Cheriton Alresford SO24 0PP</p>	<p>I would also like to make a representation about another of the Licensing Objectives – the Prevention of Public Nuisance.</p> <p>I do not consider that the Boomtown music festival does not promote the Prevention of Public Nuisance, which is one of the four licensing objectives. In particular, the low frequency bass noise travels miles from its source and it causes me and my husband considerable nuisance as it continues until 4.00 am on two nights and until midnight on two other nights. Living in a part of the South Downs National Park which enjoys very low ambient noise levels during the night at all other times of the year this is very annoying and you would like to request that, if the licence is allowed to continue, it should be amended such that amplified music ceases at either 11.00 pm or midnight on all nights.</p>	<p>The wind direction and speed does have a significant influence on where the music is audible in the surrounding area. We monitor all areas surrounding the event and manage the MNL to WCC limits set in the Premises Licence based on the loudest area.</p> <p>MP6 (Cheriton) this year was in Markall Close, no exceedances of the MNL limit recorded here in 2024. Some music was audible on Wednesday evening but rectified to the satisfaction of WCC promptly.</p> <p>Yes, the area has a low background sound level but we are operating to MNL limits set by WCC that should protect the majority of local residents to excessive noise disturbance (this does not mean inaudibility in the absolute sense).</p>
<p>14. Anthony McWhirter Sevington Manor Tichborne Alresford SO24 0NF</p>	<p>I would also like to make a representation about the licensing objective “The Prevention of Public Nuisance”. The noise from Boomtown can be heard over long distances although this does depend on things like wind speed and direction. The prevailing wind tends to be westerly or south westerly and we have certainly heard the sound from our house during the day and during the evening. As the music is currently permitted to continue until 4.00am in the morning on two nights</p>	<p>The wind direction and speed does have a significant influence on where the music is audible in the surrounding area. We monitor all areas surrounding the event and manage the MNL to WCC limits set in the Premises Licence based on the loudest area.</p> <p>MP5 is in Tichborne, no exceedances of the MNL limit recorded here in 2024. Some music was audible on Wednesday evening but rectified promptly.</p>

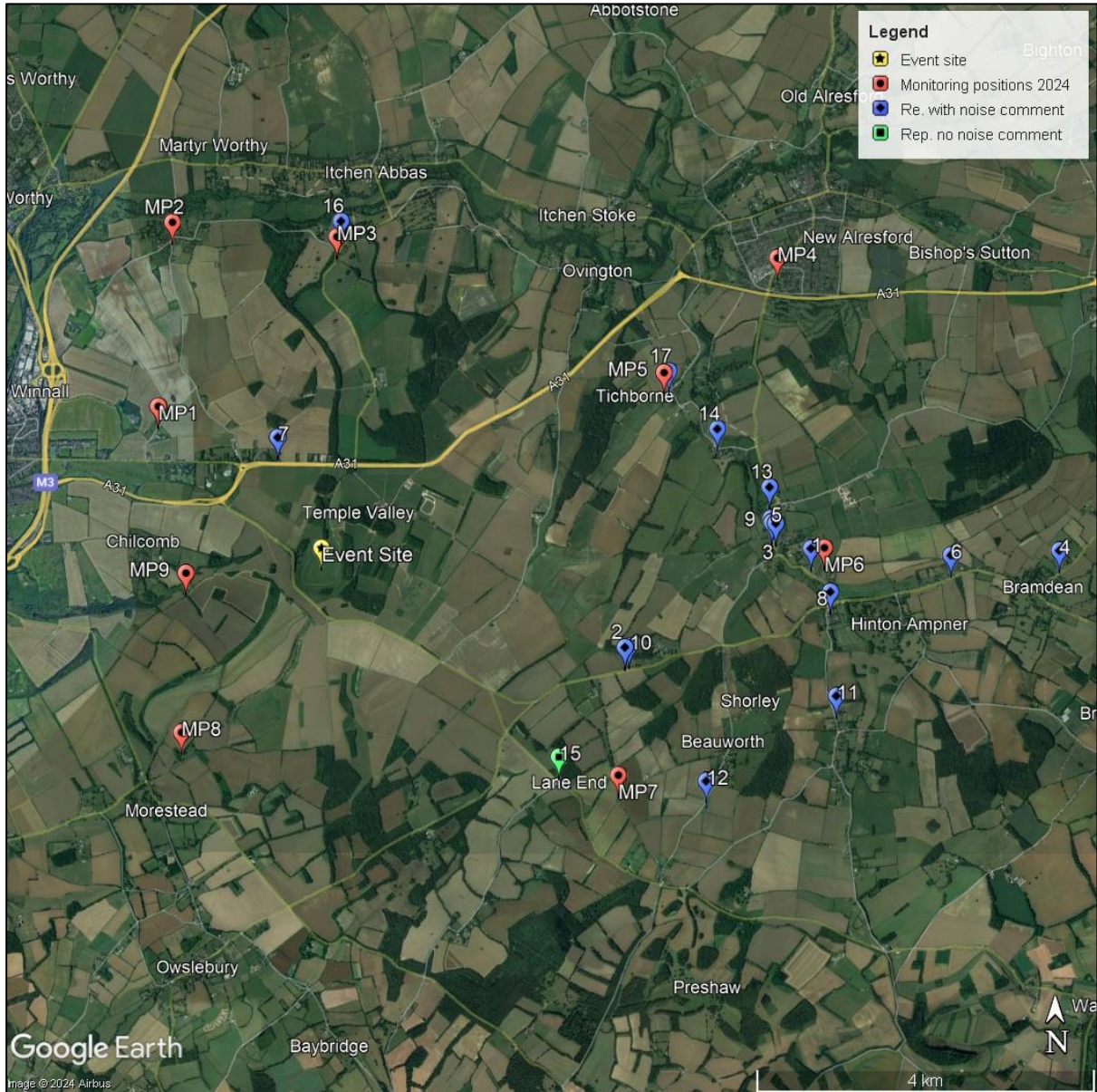
	<p>this is a real interference with our ability to enjoy our house. Therefore, to provide a better balance between those who live in the area and those who attend the event, I suggest further restricting the nighttime hours during which music can be played to ,say, midnight or 2.00am and /or restricting the permitted noise level after, say, midnight or 1.00pm. I cannot believe that it is really necessary for such high levels of noise to carry on until 4.00am in the morning.</p>	
<p>15. Terence Jones Longwood View Lane End Owslebury Winchester SO21 1JZ</p>	<p>[No comments on noise.]</p>	<p>[No comments on noise.]</p>
<p>16. Alison Matthews Lake House Avington</p>	<p>I understand that prevention of public nuisance is one of the Licensing Objectives. Residents of Avington, as I am, suffer considerable nuisance for a week every summer when the whole area is disrupted by the noise and the strobe lighting with resulting loss of sleep.</p>	<p>No specific noise concerns mentioned.</p> <p>MP3 is in Avington, minor exceedances of the MNL occurred on the Thursday evening in 2024 but were heavily influenced by the strong wind gusts that affected the measurements. On Friday and Saturday nights there were no exceedances of the MNL limits. On Sunday the wind was from the south in the late evening and the MNL limit was exceeded between approximately 23:30 and 00:00.</p>
<p>17. Tichborne Parish Council</p>	<p>If the Sub-committee is not minded to revoke or suspend the existing premises licence then we would ask it to consider curtailing the level of disturbance to achieve the licensing objective of the Prevention of Public Nuisance.</p> <p>Most of our parish is in the South Downs National Park and one of the special qualities of the National Park is “relative tranquillity”.</p>	<p>MP5 is in Tichborne, no exceedances of the MNL limit recorded here in 2024. Some music was audible on Wednesday evening but rectified promptly.</p> <p>Tranquillity is not just about noise levels but many other factors including character and context, it also includes visual metrics. Yes, the area has a low background sound level but we are operating to MNL limits set by WCC that should protect the majority of local residents to excessive noise</p>

		disturbance (this does not mean inaudibility in the absolute sense).
--	--	--

3 LOCATIONS OF REPRESENTATIONS

Figure 3.1 shows a plan of the locations of the representations.

Figure 3.1: Location of Representations



Glastonbury and Boomtown Stage Closing Times

Glastonbury 2024	Boomtown 2024
<u>Wednesday</u> <ul style="list-style-type: none"> ▪ Night-time Areas – 00:00 ▪ Late-night Areas – 00:00 	<u>Wednesday</u> <i>Inaudibility criteria at monitoring positions.</i> <ul style="list-style-type: none"> ▪ Street Parties – 20:00 ▪ Small Venues – Up to 23:00
<u>Thursday</u> <ul style="list-style-type: none"> ▪ Night-time Areas – 03:00 ▪ Late-night Areas – 03:00 	<u>Thursday</u> <ul style="list-style-type: none"> ▪ Street Parties – 22:00 ▪ Large Venues – 00:00 ▪ Small Venues – Up to 00:00
<u>Friday & Saturday</u> <ul style="list-style-type: none"> ▪ Primary Outdoor Stages – 00:00 ▪ Secondary Outdoor and Big Top Stages – 00:30 ▪ Night-time Areas – 03:00 ▪ Late-night Areas – 06:00 	<u>Friday & Saturday</u> <ul style="list-style-type: none"> ▪ Main Stages: Origin – Fri & Sat 03:00 Grand Central – Fri 01:00 & Sat 00:00 ▪ Large Venues – Staggered between 02:00 and 04:00 ▪ Small Venues – Up to 04:00
<u>Sunday</u> <ul style="list-style-type: none"> ▪ Primary Outdoor Stages – 23:30 ▪ Secondary Outdoor and Big Top Stages – 00:00 ▪ Night-time Areas – 02:30 ▪ Late-night Areas – 05:00 	<u>Sunday</u> <ul style="list-style-type: none"> ▪ Street Parties – 18:00 ▪ Main Stages: Origin – 00:00 Grand Central – 00:00 ▪ Large Venues – Staggered between 22:00 and 00:00 ▪ Small Venues – Up to 00:00
<p>Primary Outdoor Stages: Pyramid Stage, Other Stage, West Holts</p> <p>Secondary Outdoor and Big Top Stages: Woodsies, Levels, Park Stage, Acoustic, Avalon</p> <p>Night-time Areas: Markets and Entertainment Areas (includes: San Remo, Silver Hayes area, Glade area, Theatre & Circus area, Greenpeace area, Arcadia). All these areas have significant large stages.</p> <p>Late-night Areas: Southeast corner and The Park (includes: Shangri La area [Peace Stage], The Common area [Temple outdoor stage], Block 9 area [IICON and Genesis outdoor stages], The Unfairground area, The Park area). All these areas have significant large stages.</p>	<p>Street Parties: Pop-up sound systems.</p> <p>Main Stages: Origin and Grand Central the two main outdoor stages with the festival headliners mainly performing on these stages.</p> <p>Large Venues: The main stages of the districts, including, Hidden Woods, Nexus, Engine House, Zenith, Wrong Side of the Tracks, Spectrum 360.</p> <p>Small Venues: All other venues.</p>

It is difficult to draw a comparison between sizes of stages, as Glastonbury is at least triple the capacity of Boomtown and therefore the Primary Outdoor Stages at Glastonbury are not equal to the Main Stages at Boomtown. The Main Stages at Boomtown are similar in sound system size and capacity as some Night-time area stages at Glastonbury and the Large Venues at Boomtown are similar in sound system size and capacity as some Late-night Area stages at Glastonbury.

VICTORIOUS FESTIVAL - CONDITIONS AGREED WITH POLICE

BARS

- The licence holder shall ensure that all members of staff are informed of the objectives of the Licensing Act 2003 and the statutory requirements in order to ensure compliance with all relevant provisions of the Act.
- The licence holder must ensure that all staff selling alcohol have received adequate training to a recognised national standard on the law with regard to age restricted sales and that this has been properly documented and training records kept as a hard or digital copy for a period of 6 months after the event. These records must be made available to the Police and Licensing Authority on request. The trained persons contact details must be included in these records.
- No one shall take part in the retail sale or the supply of alcohol prior to being trained.
- A challenge 25 policy shall be in place at the event. Any person appearing to those engaged in selling or supplying alcohol to be under the age of 25 and who is attempting to buy alcohol will be required to produce satisfactory photographic identification as proof of age. Acceptable ID shall be a Valid Passport with hologram; Valid UK Photo card Driving Licence.
- Any person involved in the sale or supply of alcohol shall have a lanyard to be worn on their person detailing the training they have received for easy reference.
- Challenge 25 Signage advising customers of the Policy shall be in place at each bar.
- A refusals log shall be in operation at each bar. The refusals log shall be maintained throughout the event and be made available to Police or the Licensing Authority on request. The refusals logs shall be kept in paper or digital copied format for 2 years after the event.
- No supply of alcohol shall take place at any bar unless a Personal Licence Holder is present.
- All Personal Licence Holders shall be made aware of the festivals licence conditions. This shall be documented and a copy of the conditions shall be made available at each bar. Police and the Licensing authority shall have access to this documentation when requested and these records kept as a hard or digital copy for 2 years after the event.
- No glass shall be dispensed to members of the public. All alcohol products shall be sold in plastic bottles, served in polycarbonate or plastic drinking vessels. Any alcohol in a glass container shall be decanted into a plastic container prior to supply to customers.
- All bar managers shall have access to a radio link with the event management and security.
- Each bar shall have on display a document showing details of the bar. These details shall be the name of the bar manager, their Personal Licence number and the hours the bar is open until.
- No shots or shooters shall be available for purchase at the event. Any spirits shall be sold with a mixer.

- Any person under the age of 18 attempting to purchase alcohol or any adult attempting to purchase alcohol for someone under 18 shall be asked to leave the event after event organisers have considered that it is safe for them leave the site.
- A minimum of one SIA accredited person shall be present at each bar at all times that alcohol is being sold or supplied and have access to a radio link with the event control.
- Any person deemed unfit due to drink or drugs at the event shall be asked to leave the event after organisers have considered that it is safe for them to leave the site.
- The sale or supply of alcohol shall only be from the fixed bars as shown on the plans with this licence. This is with the exception of the Rekorderlig bar, cocktail bar and two bottle bars. The event organisers shall inform the Police Licensing Team where these bars are to be placed no later than 7 days prior to the event.
- There shall be on site at all times a person nominated by the licence holder to liaise with the Police and Licensing Authority in order to deal with any issues arising as a result of Licensing checks performed at the event.
- No alcoholic drink shall be priced below £1.50.
- A sign shall be placed at each bar encouraging persons to drink responsibly and to be aware that it is an offence to be drunk in charge of a child.

SECURITY

- There shall be a fence around the full perimeter of the licensable area. All fencing used shall have no gaps in the bottom. At the north, west and east sides of the site the fence shall measure a minimum of 3 metres from the ground level to the top. At the south side of the site the fencing used shall measure a minimum of 2 metres from the ground level to the top.
- All staff shall be issued with a wristband identifying them as staff working at the event
- The Licence Holder shall ensure that there are appropriate levels of staff on site for the maximum attendance levels of 39,999 at all times the site is open to the public.
- There shall be a minimum of 200 persons employed to perform a security function on site whilst the venue is open to the public from 13:00 hours. A minimum of 33% of these persons shall be front line SIA trained. When the licence holder wishes to use the area on the plans currently unused in the first year, then a proportionate increase in SIA staff shall be identified by risk assessment 6 months in advance of the next event.
- The licence holder shall maintain a register giving details of each and every person employed in the role of a security and shall provide upon request by any Police Officer or Council Officer, the following details:-
 - (a) The licence number, name, date of birth and residential address of that person;
 - (b) The time at which he/she commenced that period of duty
 - (c) The time at which he/she finished the period of duty
 - (d) Any times during the period of duty when he/she was not on duty;

- (e) If that person is not an employee of the licence holder, the name of the person by whom that person is employed or through whom the services of that person were engaged;
- (f) The register shall be made available to Police or the Licence Authority on request

This register shall be in paper or digital format.

Any person employed by the Licence Holder carrying out security activities shall wear a fluorescent/reflective tabard/jacket clearly marked with their role on the back.

- Every entry/exit point to the venue shall be manned by an appropriately accredited SIA person.
- A front line SIA accredited person shall patrol any area demarked officially for the use of customer car parking at all times whilst the car park is in use for customers at the event.

- All security persons shall be linked via radio
- The DPS shall ensure that bag searches are carried out as customers enter the event.
- The DPS shall ensure that any person appearing to be under the influence of illegal drugs shall be refused entry.
- Customers shall not be permitted to bring their own alcohol onto the site.
- The DPS shall ensure that customers do not bring Glass bottles onto the site.
- The DPS shall ensure that customers are allowed to bring their own bottles of water so long as they are sealed and unopened.
- Last entry to customers shall be 20:00 hours. There shall be no admittance to customers after this time unless a decision is made by the event management and the rationale for this admittance is documented in the event log.
- Upon request by a responsible authority the holder of the premises licence or an agent on behalf of and under the authority of the licence holder shall provide precise information regarding the number of people present on the site at the given time during which licensable activities are taking place.
- The licence holder shall ensure that patrols of the site including the car park area are performed by security staff of the site whilst the site is closed to the public.
- There shall be an SIA accredited person working in each of the attractions whilst they are open to members of the public. These attractions shall be, The D Day Museum, Southsea Castle, The Skate Park, The Pyramids and the Blue Reef Aquarium.
- No alcohol shall be taken into any of the attractions (The D Day Museum, Southsea Castle, The Skate Park, The blue reef aquarium, with the exception of the real ale section of the Pyramids.

Children/Vulnerable adults

- There shall be an area within the licensable area dedicated to dealing with child welfare and vulnerable adults.
- Persons staffing these areas shall be CRB checked or have the appropriate similar legal check performed and have the necessary qualifications to look after children or vulnerable adults. These checks and qualifications shall be documented and provided to Police on request.
- Staff working in the child welfare area shall work in a minimum of twos when dealing with children and shall not be left alone with them at any time.
- Children shall not be left alone without supervision in the child welfare area.
- Staff working in this area shall have access to a radio connecting with Event Control.
- Children and adults shall be kept in separate areas within the dedicated area and this area shall be kept secure
- There shall be a written policy in place stating how the event management shall deal with lost children and vulnerable adults.
- No persons under the age of 18 shall be permitted entry to the event without being with a responsible adult over the age of 18.
- Wristbands enabling children to have parents contact details written on them must be offered to children attending the event.

Medical

- There shall be a facility on site to deal with persons taken unwell or injured during the course of the event. This facility shall be open at all times that the site is open to members of the public.
- An SIA accredited person shall be present at all times that the facility is open to members of the public.
- The medical facility shall have access to a radio connecting to the site control.
- The medical facility shall be staffed by the following persons:
 - 1) 12 Ambulance care assistants
 - 2) 5 Emergency care assistants
 - 3) 2 Ambulance Technicians
 - 4) 3 State Registered Paramedics
 - 5) 2 Nurses
 - 6) 1 Doctor
 - 7) 3 Front Line emergency Ambulances
 - 8) 1 Duty officer

Policies

- There shall be a written drugs policy in place for the event. This policy shall be agreed between the licence holder and the Police in writing and this policy shall be implemented whilst licensable activity is taking place.

- There shall be a written ejection policy in place for the event. This policy shall be agreed between the licence holder and the Police in writing and this policy shall be implemented whilst licensable activity is taking place.
- A fire risk assessment shall be performed prior to the event. A copy shall be made available to the Police and relevant licensing authorities on request.
- The licence holder shall comply with the most recent event management plan for the event. The Police shall have access to the most recent event management plan on request. Any breach of the event management plan shall be seen as a breach of the premises licence.

CCTV

A recording CCTV system shall be installed and be fully operational during the course of the event. This shall include the period the premises licence is covered for when customers are not using the site.

The recording equipment shall be stored and operated in a secure environment with limited access, to avoid damage, theft, unauthorised viewing and to maintain the integrity of the system. A record shall be kept of any access made to information held on the system.

The system clock shall be accurate.

The CCTV system will have sufficient storage capacity for 7 days evidential quality images.

The CCTV system shall cover all the bar areas within the licensable area, all entrance and exit points on site, all stage areas and all main thoroughfares within the site. A camera shall cover the car park area to the site.

There shall be a facility to burn off Police a copy of CCTV immediately should Police require it.

There will be a facility for someone to operate the CCTV system at all times that the system is in place.

The CCTV hard drive shall be kept for a period of 12 months after the event.

There shall be a facility for the licence holder to view images and provide them to Police in a viewable format during this 12 month period.

Premises Licence Number:

18/00945/LATRDP

Isle of Wight Festival Ltd

Isle of Wight Festival

Seaclose Park
Fairlee Road
Newport
Isle of Wight
PO30 2DN

Licensable Activities Authorised by this Licence

Plays (Inside/Outside)	Thursday	Campsite	12:00 to 23:00 hrs
		Penny Lane	16:00 to 23:00 hrs
		Strawberry Fields	18:00 to 23:00 hrs
		Arena	Not permitted
	Friday	Campsite	11:00 to 02:00 hrs
		Penny Lane	13:00 to 02:00 hrs
		Strawberry Fields	14:00 to 02:00 hrs
		Arena	14:00 to 00:01 hrs
	Saturday	Campsite	10:00 to 02:00 hrs
		Penny Lane	10:00 to 02:00 hrs
		Strawberry Fields	11:00 to 02:00 hrs
		Arena	11:00 to 00:01 hrs
	Sunday	Campsite	10:00 to 01:00 hrs
		Penny Lane	10:00 to 01:00 hrs
		Strawberry Fields	11:00 to 01:00 hrs
		Arena	11:00 to 23:00 hrs
Films (Inside/Outside)	Thursday	Campsite	12:00 to 23:00 hrs
		Penny Lane	16:00 to 23:00 hrs
		Strawberry Fields	18:00 to 23:00 hrs
		Arena	Not permitted
	Friday	Campsite	11:00 to 02:00 hrs
		Penny Lane	13:00 to 02:00 hrs
		Strawberry Fields	14:00 to 02:00 hrs
		Arena	14:00 to 00:01 hrs
	Saturday	Campsite	10:00 to 02:00 hrs
		Penny Lane	10:00 to 02:00 hrs
		Strawberry Fields	11:00 to 02:00 hrs
		Arena	11:00 to 00:01 hrs
	Sunday	Campsite	10:00 to 01:00 hrs
		Penny Lane	10:00 to 01:00 hrs
		Strawberry Fields	11:00 to 01:00 hrs
		Arena	11:00 to 23:00 hrs
Boxing or Wrestling (Inside/Outside)	Thursday	Campsite	12:00 to 23:00 hrs
		Penny Lane	16:00 to 23:00 hrs
		Strawberry Fields	18:00 to 23:00 hrs
		Arena	Not permitted
	Friday	Campsite	11:00 to 02:00 hrs
		Penny Lane	13:00 to 02:00 hrs
		Strawberry Fields	14:00 to 02:00 hrs
		Arena	14:00 to 00:01 hrs
	Saturday	Campsite	10:00 to 02:00 hrs
		Penny Lane	10:00 to 02:00 hrs
		Strawberry Fields	11:00 to 02:00 hrs
		Arena	11:00 to 00:01 hrs
	Sunday	Campsite	10:00 to 01:00 hrs
		Penny Lane	10:00 to 01:00 hrs
		Strawberry Fields	11:00 to 01:00 hrs
		Arena	11:00 to 23:00 hrs

Live Music (Inside/Outside)	Thursday	Campsite Penny Lane Strawberry Fields Arena	16:00 to 00:01 hrs 16:00 to 23:00 hrs 18:00 to 23:00 hrs Not permitted
	Friday	Campsite Penny Lane Strawberry Fields Arena	13:00 to 02:00 hrs 16:00 to 02:00 hrs 16:00 to 02:00 hrs 16:00 to 00:01 hrs
	Saturday	Campsite Penny Lane Strawberry Fields Arena	10:00 to 02:00 hrs 10:00 to 02:00 hrs 11:00 to 02:00 hrs 11:00 to 00:01 hrs
	Sunday	Campsite Penny Lane Strawberry Fields Arena	10:00 to 01:00 hrs 10:00 to 01:00 hrs 11:00 to 01:00 hrs 11:00 to 23:00 hrs
Recorded Music (Inside/Outside)	Thursday	Campsite Penny Lane Strawberry Fields Arena	12:00 to 00:01 hrs 16:00 to 23:00 hrs 18:00 to 23:00 hrs Not permitted
	Friday	Campsite Penny Lane Strawberry Fields Arena	13:00 to 02:00 hrs 16:00 to 02:00 hrs 16:00 to 02:00 hrs 16:00 to 00:01 hrs
	Saturday	Campsite Penny Lane Strawberry Fields Arena	10:00 to 02:00 hrs 10:00 to 02:00 hrs 11:00 to 02:00 hrs 11:00 to 00:01 hrs
	Sunday	Campsite Penny Lane Strawberry Fields Arena	10:00 to 01:00 hrs 10:00 to 01:00 hrs 11:00 to 01:00 hrs 11:00 to 23:00 hrs
Performances of Dance (Inside/Outside)	Thursday	Campsite Penny Lane Strawberry Fields Arena	12:00 to 23:00 hrs 16:00 to 23:00 hrs 18:00 to 23:00 hrs Not permitted
	Friday	Campsite Penny Lane Strawberry Fields Arena	13:00 to 02:00 hrs 16:00 to 02:00 hrs 16:00 to 02:00 hrs 16:00 to 00:01 hrs
	Saturday	Campsite Penny Lane Strawberry Fields Arena	10:00 to 02:00 hrs 10:00 to 02:00 hrs 11:00 to 02:00 hrs 11:00 to 00:01 hrs
	Sunday	Campsite Penny Lane Strawberry Fields Arena	10:00 to 01:00 hrs 10:00 to 01:00 hrs 11:00 to 01:00 hrs 11:00 to 23:00 hrs

Activities of a Similar Description (Inside/Outside)	Thursday	Campsite Penny Lane Strawberry Fields Arena	12:00 to 23:00 hrs 16:00 to 23:00 hrs 18:00 to 23:00 hrs Not permitted
	Friday	Campsite Penny Lane Strawberry Fields Arena	13:00 to 02:00 hrs 16:00 to 02:00 hrs 16:00 to 02:00 hrs 16:00 to 00:01 hrs
	Saturday	Campsite Penny Lane Strawberry Fields Arena	10:00 to 02:00 hrs 10:00 to 02:00 hrs 11:00 to 02:00 hrs 11:00 to 00:01 hrs
	Sunday	Campsite Penny Lane Strawberry Fields Arena	10:00 to 01:00 hrs 10:00 to 01:00 hrs 11:00 to 01:00 hrs 11:00 to 23:00 hrs
Late Night Refreshment (Inside/Outside)	Thursday	Campsite Penny Lane Strawberry Fields Arena	23:00 to 05:00 hrs Not permitted Not permitted Not permitted
	Friday	Campsite Penny Lane Strawberry Fields Arena	23:00 to 05:00 hrs 23:00 to 02:00 hrs 23:00 to 02:00 hrs 23:00 to 00:01 hrs
	Saturday	Campsite Penny Lane Strawberry Fields Arena	23:00 to 05:00 hrs 23:00 to 02:00 hrs 23:00 to 02:00 hrs 23:00 to 00:01 hrs
	Sunday	Campsite Penny Lane Strawberry Fields Arena	23:00 to 05:00 hrs 23:00 to 01:00 hrs 23:00 to 01:00 hrs Not permitted
Supply of Alcohol	Thursday	Campsite Penny Lane Strawberry Fields Arena	12:00 to 00:01 hrs 16:00 to 23:00 hrs 18:00 to 23:00 hrs Not permitted
	Friday	Campsite Penny Lane Strawberry Fields Arena	11:00 to 02:00 hrs 13:00 to 02:00 hrs 14:00 to 02:00 hrs 14:00 to 00:01 hrs
	Saturday	Campsite Penny Lane Strawberry Fields Arena	10:00 to 02:00 hrs 10:00 to 02:00 hrs 11:00 to 02:00 hrs 11:00 to 00:01 hrs
	Sunday	Campsite Penny Lane Strawberry Fields Arena	10:00 to 01:00 hrs 10:00 to 01:00 hrs 11:00 to 01:00 hrs 11:00 to 23:00 hrs

Opening Times	Thursday	Campsite	10:00 to noon Monday
		Penny Lane	16:00 to 23:00 hrs
		Strawberry Fields	18:00 to 23:00 hrs
		Arena	Not permitted
	Friday	Penny Lane	13:00 to 02:00 hrs
		Strawberry Fields	14:00 to 02:00 hrs
		Arena	14:00 to 00:01 hrs
	Saturday	Penny Lane	10:00 to 02:00 hrs
		Strawberry Fields	11:00 to 02:00 hrs
		Arena	11:00 to 00:01 hrs
	Sunday	Penny Lane	10:00 to 01:00 hrs
		Strawberry Fields	11:00 to 01:00 hrs
		Arena	11:00 to 23:00 hrs

This licence authorises the sale of alcohol for consumption on and off the premises

Isle of Wight Council



Licensing Act 2003

Premises Licence Part A

Part 2

Name, address and telephone number of holder of premises licence

Isle of Wight Festival Ltd
2nd Floor Regent Arcade House, 19-25 Argyll Street, London, W1F 7TS

Registered number of holder

10298216

Name and address of Designated Premises Supervisor

David Roy Steele

Personal Licence Number and issuing authority of personal licence held by designated premises supervisor

2018/03168/02SPEN
Southampton City Council

ISLE OF WIGHT COUNCIL

Jubilee Stores
The Quay
Newport
Isle of Wight
PO30 2EH

Annex 1

Mandatory Conditions

(Where the Premises Licence authorises the supply of alcohol)

1. No supply of alcohol may be made under the premises licence
 - a) at a time when there is no designated premises supervisor in respect of the premises licence, or
 - b) at a time when the designated premises supervisor does not hold a personal licence or his personal licence is suspended.
2. Every supply of alcohol under the premises licence must be made or authorised by a person who holds a personal licence.
3. (1) The responsible person must ensure that staff on relevant premises do not carry out, arrange or participate in any irresponsible promotions in relation to the premises.

(2) In this paragraph, an irresponsible promotion means any one or more of the following activities, or substantially similar activities, carried on for the purpose of encouraging the sale or supply of alcohol for consumption on the premises-
 - a) games or other activities which require or encourage, or are designed to require or encourage, individuals to-
 - i) drink a quantity of alcohol within a time limit (other than to drink alcohol sold or supplied on the premises before the cessation of the period in which the responsible person is authorised to sell or supply alcohol), or
 - ii) drink as much alcohol as possible (whether within a time limit or otherwise);
 - b) provision of unlimited or unspecified quantities of alcohol free or for a fixed or discounted fee to the public or to a group defined by a particular characteristic in a manner which carries a significant risk of undermining a licensing objective;
 - c) provision of free or discounted alcohol or any other thing as a prize to encourage or reward the purchase and consumption of alcohol over a period of 24 hours or less in a manner which carries a significant risk of undermining a licensing objective;

- d) selling or supplying alcohol in association with promotional posters or flyers on, or in the vicinity of, the premises which can reasonably be considered to condone, encourage or glamorise anti-social behaviour or to refer to the effects of drunkenness in any favourable manner;
 - e) dispensing alcohol directly by one person into the mouth of another (other than where that other person is unable to drink without assistance by reason of a disability).
4. The responsible person must ensure that free potable water is provided on request to customers where it is reasonably available.
- 5.
- 1) The premises licence holder or club premises certificate holder must ensure that an age verification policy is adopted in respect of the premises in relation to the sale or supply of alcohol.
 - 2) The designated premises supervisor in relation to the premises licence must ensure that the supply of alcohol at the premises is carried on in accordance with the age verification policy.
 - 3) The policy must require individuals who appear to the responsible person to be under 18 years of age (or such older age as may be specified in the policy) to produce on request, before being served alcohol, identification bearing their photograph, date of birth and either
 - a) a holographic mark, or
 - b) an ultraviolet feature
6. The responsible person must ensure that—
- a) where any of the following alcoholic drinks is sold or supplied for consumption on the premises (other than alcoholic drinks sold or supplied having been made up in advance ready for sale or supply in a securely closed container) it is available to customers in the following measures—
 - i) beer or cider: ½ pint;
 - ii) gin, rum, vodka or whisky: 25 ml or 35 ml; and
 - iii) still wine in a glass: 125 ml; and
 - b) these measures are displayed in a menu, price list or other printed material which is available to customers on the premises , and
 - c) where a customer does not, in relation to a sale of alcohol, specify the quantity of alcohol to be sold, the customer is made aware that these measures are available.
7. Maximum permitted price
- (1) A relevant person shall ensure that no alcohol is sold or supplied for consumption on or off the premises for a price which is less than the permitted price.
 - (2) For the purposes of the condition set out in paragraph 1 —
 - a) “duty” is to be construed in accordance with the Alcoholic Liquor Duties Act 1979;

b) “permitted price” is the price found by applying the formula —

$$P = D + (D \times V) \text{ where—}$$

- (i) **P** is the permitted price,
- (ii) **D** is the amount of duty chargeable in relation to the alcohol as if the duty were charged on the date of the sale or supply of the alcohol, and
- (iii) **V** is the rate of value added tax chargeable in relation to the alcohol as if the value added tax were charged on the date of the sale or supply of the alcohol;

c) “relevant person” means, in relation to premises in respect of which there is in force a premises licence —

- (i) the holder of the premises licence,
- (ii) the designated premises supervisor (if any) in respect of such a licence, or
- (iii) the personal licence holder who makes or authorises a supply of alcohol under such a licence;

d) “relevant person” means, in relation to premises in respect of which there is in force a club premises certificate, any member or officer of the club present on the premises in a capacity which enables the member or officer to prevent the supply in question; and

e) “valued added tax” means value added tax charged in accordance with the Value Added Tax Act 1994.

(3) Where the permitted price given by Paragraph (b) of paragraph 2 would (apart from this paragraph) not be a whole number of pennies, the price given by that sub-paragraph shall be taken to be the price actually given by that sub-paragraph rounded up to the nearest penny.

(4) (1) Sub-paragraph (2) applies where the permitted price given by Paragraph (b) of paragraph 2 on a day (“the first day”) would be different from the permitted price on the next day (“the second day”) as a result of a change to the rate of duty or value added tax.

(2) The permitted price which would apply on the first day applies to sales or supplies of alcohol which take place before the expiry of the period of 14 days beginning on the second day.

(Where the Premises Licence authorises the exhibition of films)

8. Admission of children to the exhibition of any film is to be restricted in accordance with Section 20.

(Where the Premises Licence includes a condition that door supervisors must be used)

9. All security personnel must be licensed by the Security Industry Authority.

ISLE OF WIGHT COUNCIL

Jubilee Stores
The Quay
Newport
Isle of Wight
PO30 2EH

Premises Licence Number
IW 17/00490

Annex 2 Conditions consistent with the Operating Schedule

N/A

ISLE OF WIGHT COUNCIL

Jubilee Stores
The Quay
Newport
Isle of Wight
PO30 2EH

Premises Licence Number
IW 17/00490

Annex 3

Conditions attached after a hearing by the licensing authority

1. The holder of the premises licence, or an agent on behalf of and under the authority of the licence holder, shall produce an event safety and operational plan (hereinafter referred to as 'ESOP').
2. The ESOP shall, amongst other matters, address the methods by which the licence holder proposes to manage the following matters in accordance with the licensing objectives:
 - crowd safety;
 - procedures in the event of emergency;
 - the reduction of crime and disruption of the supply and possession of drugs;
 - regulation of the number of persons on the event site;
 - stewarding;
 - the responsible sale of alcohol;
 - the welfare of persons working at the event site;
 - missing persons and the safety of children;
 - ticket sales and conditions of entry;
 - the provision of first aid;
 - accident reporting procedures;
 - the control of noise and the prevention of public nuisance;
 - the prevention of fire;
 - the use of fireworks;
 - the safety of food;
 - the control of litter;
 - sanitation and the disposal of waste;
 - the safety of temporary structures;
 - traffic management;
 - provision of facilities for disabled persons;
 - the structure for the operational management of the event, including the composition and functions of the event liaison team (hereinafter referred to as 'ELT');
 - the responsibilities of personnel engaged at the site.
3. The ESOP shall be revised on an annual basis and, with effect from 2012, a draft version of that document shall be circulated to all responsible authorities, and to the licensing authority (Isle of Wight Council), not later than 120 days before the start of each Isle of Wight Festival event (hereinafter referred to as 'event').

4. Following the circulation of the draft ESOP, the licence holder, or an agent on behalf of and under the authority of the licence holder, shall consult with all responsible authorities and shall take due account of any representation made by a responsible authority regarding the content of the document.
5. With effect from 2012, subject to conditions 7 and 8 below, the ESOP shall be finalised not later than 56 days before the start of each Isle of Wight Festival event and shall be circulated in final form to all responsible authorities and to the licensing authority.
6. The Licence holder must obtain written approval for the Event Safety and Operational Plan from the Licensing Authority at least 14 days prior to the event.
7. Where, following the submission of the final version of the ESOP (as required under condition 5 above) but prior to the commencement of the event, the licence holder considers it necessary to make any adjustment to the ESOP, the proposed adjustment shall be notified to the licensing authority, who may notify the relevant responsible authority. No adjustment shall be made to the ESOP unless it is agreed with the licensing authority.
8. Where, during the course of the event, the licence holder considers it necessary to deviate from any provision within the ESOP, the matter shall be brought to the attention of representatives of the relevant responsible authority or authorities within the ELT who may approve such deviation. Any such decision shall be documented by the ELT and such approved deviation shall not constitute a breach of condition 10 below.
9. The licence holder may at any time prior to an event provide appropriate information to accompany the ESOP. This may include appendices to the plan detailing such matters as the names and contact details of persons engaged at the site. Nothing in the conditions of this licence shall prevent the continued flow of information, especially where such information could not reasonably have been known to the licence holder prior to 56 days before the event.
10. Where a person placed under a positive obligation to comply with a provision of the ESOP fails to do so, the failure shall be regarded as a breach of this condition of the premises licence, provided that the failure on that occasion amounted to a failure to promote one or more of the licensing objectives.
11. Any proposed alteration to the following matters shall not be made during the period of the premises licence except by formal variation of the licence:
 - The number of days over which the event takes place each year (save for any decrease);
 - The hours the licensed area is open to the public for licensable activities (save for any decrease);
 - The hours during which licensable activities are to take place (save for any decrease);
 - An increase in the total noise output from stages at the event site beyond that permitted pursuant to the provisions of the pre-existing ESOP;
 - Material changes to the general location of the stages from those identified in the pre-existing ESOP;
 - The overall public capacity;
 - The perimeter of the licensed area;
 - Change of the designated premises supervisor.

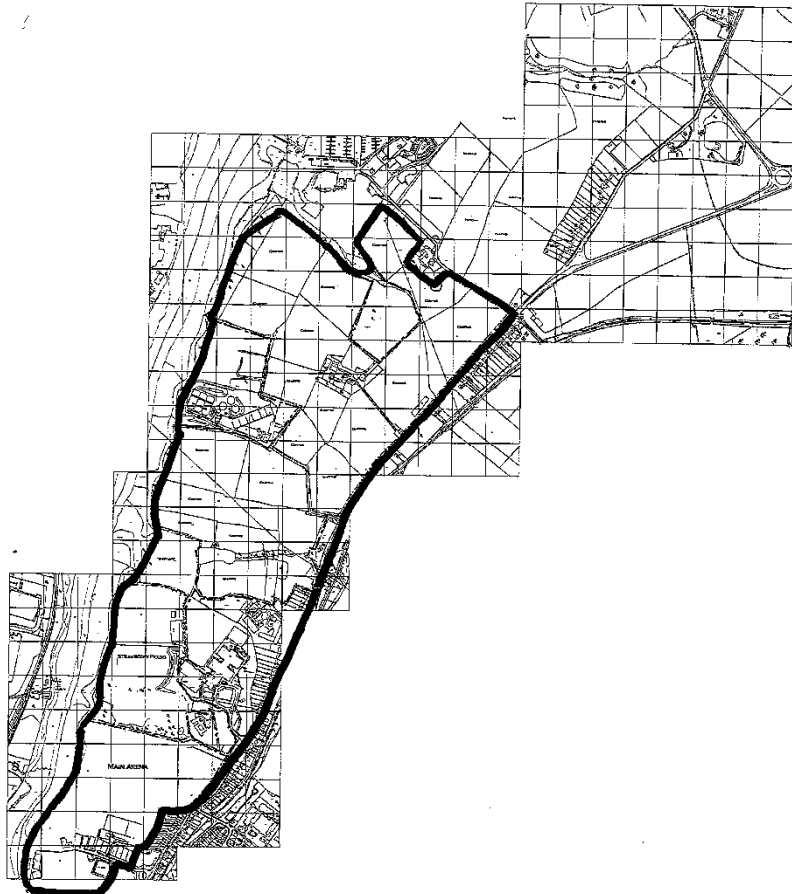
12. (Added at review hearing Dec 2012). The Licence Holder shall, with effect from 2013, and subject to conditions 7 and 8 of the licence publish a public facing document based on the ESOP to ensure that local residents, local councils and Island residents are kept informed. The public facing document shall be produced not later than 56 days before the start of each Isle of Wight Festival Event.
13. (Added at review hearing Dec 2012). The Licence Holder shall with effect from 2013, and subject to conditions 7 and 8 of the licence, ensure that the Traffic Management Plan is published not later than 14 days prior to the start of the Isle of Wight Festival Event.


ISLE OF WIGHT COUNCIL

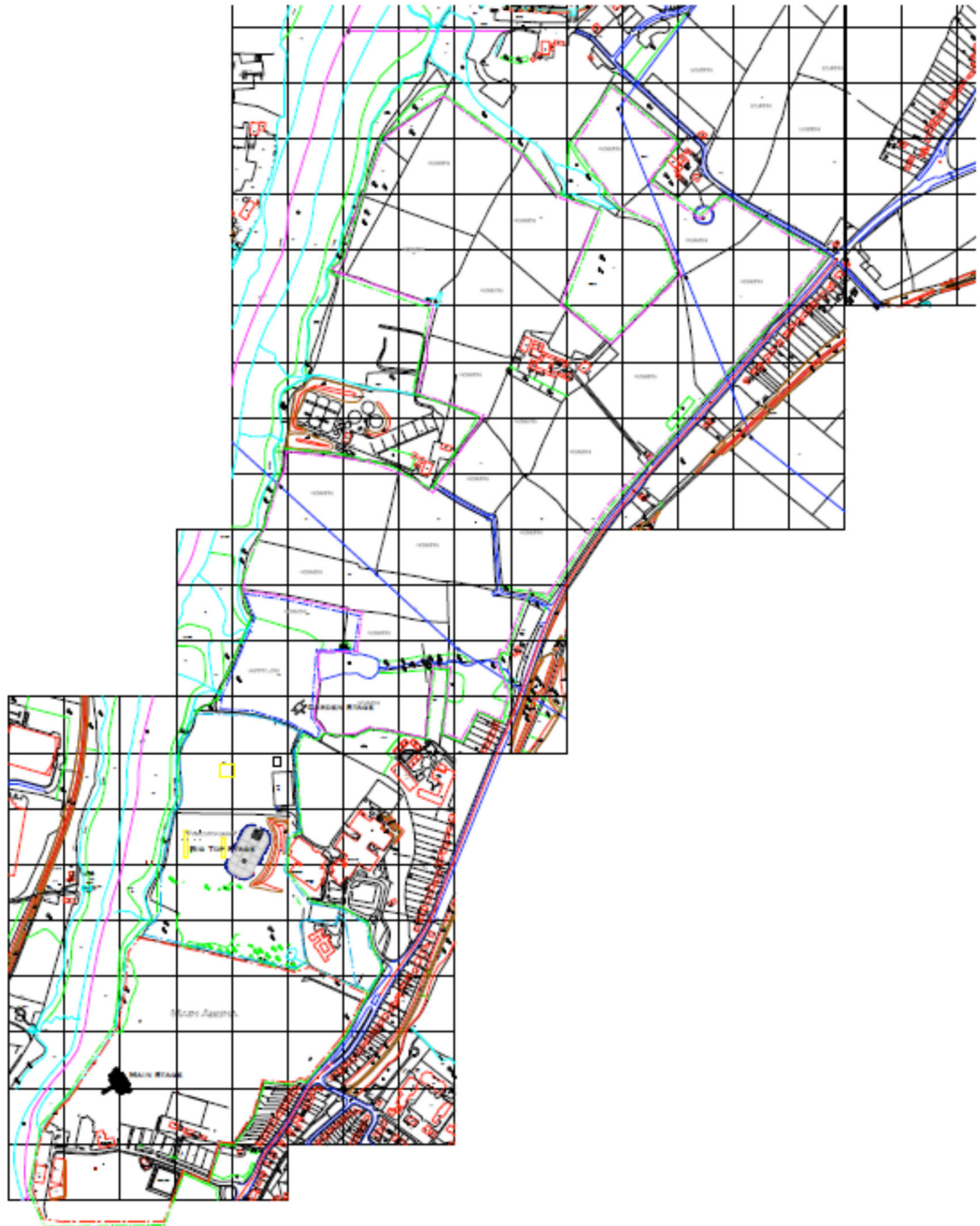
Jubilee Stores
The Quay
Newport
Isle of Wight
PO30 2EH


Premises Licence Number
IW 17/00490

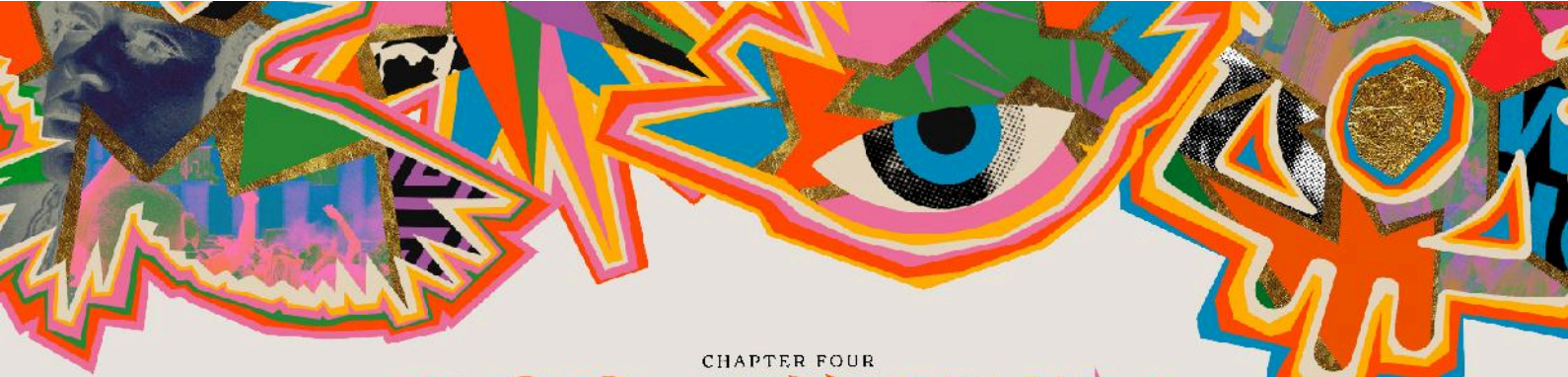
Annex 4 Plans



-----	MAIN ARENA	CLIENT	SOLO	 SOLO I.O.W. FESTIVAL PLAN	<small>THE DEVELOPER: RHS PROJECTS LTD RHS HOUSE COURTNEY ROAD NEWPORT ISLE OF WIGHT PO30 2EH Tel: 01983 871111 www.rhs.org.uk</small>
-----	STRAWBERRY FIELDS	JOB TITLE	IOW FESTIVAL AMBIT		
-----	PENNY LANE	REF	KM		
-----	CAMPING	DATE	30/3/2011		
-----	AMBIT OF LICENCE	SCALE	1:4000 @ A1 APPROX		
		DRAWN BY	KETH MORRIS		



<ul style="list-style-type: none"> - - - - - MAIN ARENA - - - - - STRAWBERRY FIELDS - - - - - PENNY LANE - - - - - CAMPING - - - - - AMBIT OF LICENSE 	<p>CLIENT JOB TITLE REP DATE SCALE DRAWN BY</p>	<p>SOLO I.O.W. FESTIVAL MUSIC VENUE KM 21/3/2012 1:3000 @A1 APPROX KATH MORRIS</p>	 <p>SOLO I.O.W. FESTIVAL PLAN 2012</p>	<p>EVERETT MCBRIDE The County Council Planning Department Penny Lane Newry, Co. Down BT41 9AG Tel: 0300 200 000 Fax: 0300 200 001 www.everettmcbride.com</p>
--	---	--	---	--



CHAPTER FOUR

BOOMTOWN

POWER OF NOW

6-10TH AUGUST 2025

Boomtown Festivals UK Ltd
126 Albert Road
St Phillips Marsh
Bristol

18 Nov 2024

To whom it may concern,

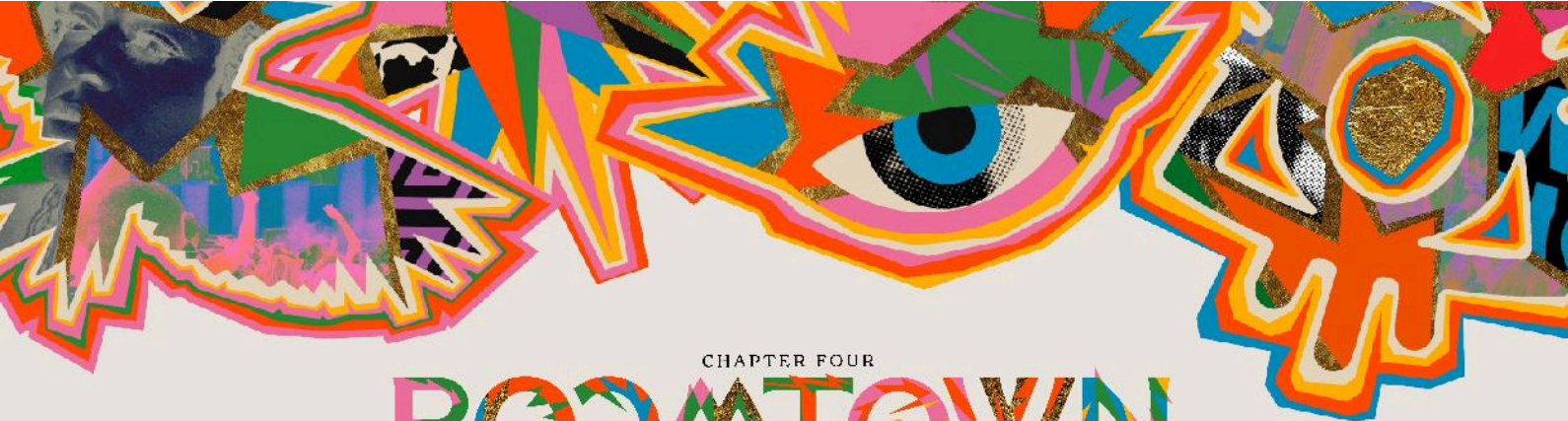
I write in connection with the concerns raised regarding ecology, particularly ground-nesting birds (GNB), in the representation to the licensing review.

Within Boomtown's current planning permission, Condition 4 is imposed and designed to assess whether the festival has any adverse impact on biodiversity and, if it does, what that impact might be (magnitude and duration). Each year, a range of work is undertaken to provide evidence and reporting to the South Downs National Park Authority that supports the discharge of the condition.

All ecological surveys undertaken indicate healthy GNB territories and recent surveys further support this and indicate that the territories have expanded.

In 2022, Boomtown appointed Environmental Planning and Research (EPR) Ltd. to support its planning application by undertaking a full ecological study of the land at the Matterley Estate. To safeguard protected species and their habitats, a rigorous suite of ecological surveys took place across the 2023/24 field seasons to identify protected and notable species using the Site. The future layout and design of the Festival has been guided by the results. In line with the mitigation hierarchy, impact avoidance measures have been considered first and foremost, followed by mitigating measures where applicable, before prescribing compensation strategies where residual impacts remain. Enhancement measures have also been prescribed.

EPR brings extensive expertise in ecological planning and environmental impact assessment. Known for its evidence-based approach, EPR has a strong track record of meeting best practices and regulatory standards. Their portfolio showcases both scientific depth and reliable assessments across a range of complex ecological challenges. As a Chartered Institute of Ecology and Environmental Management (CIEEM) Registered Practice, EPR demonstrates high professional standards that



CHAPTER FOUR

BOOMTOWN

POWER OF NOW

6-10TH AUGUST 2025

ensure the best outcomes for biodiversity while supporting economic growth. Their experience spans projects of all scales, with nationally and internationally recognised expertise in Biodiversity Net Gain and Habitats Regulations Assessments. EPR's capabilities include assessing ecological impacts and designing effective mitigation strategies.

I am confident that the expertise provided by EPR, coupled with the breadth of ecological surveys and assessments conducted, aligns fully with the highest standards of environmental and ecological diligence as outlined in our planning considerations.

EPR's approach adheres strictly to the Chartered Institute of Ecology and Environmental Management (CIEEM) Guidelines for Ecological Impact Assessment in the UK and Ireland. Their methodology involves a structured, step-wise approach that considers each project activity's potential to generate biophysical changes that may affect Important Ecological Features (IEFs). The assessment covers scoping, identification of Zones of Influence, impact evaluations, and application of the mitigation hierarchy to avoid, reduce, or compensate for any adverse effects. This approach ensures a comprehensive evaluation, aligning with both CIEEM standards and relevant policies for biodiversity protection and enhancement.

I confirm that the concerns raised by this resident have been carefully reviewed and are already included in our planning considerations. I understand the importance of transparent and collaborative engagement with the community, and our assessment reflects this commitment.

The ecological assessments and recommendations from EPR will be embedded into our plans, proposals, and operational procedures upon receiving a successful planning determination. Boomtown is dedicated to implementing these ecological recommendations to ensure all mitigative actions and enhancements are effectively carried out.

Finally, I assure you that EPR's study and the resulting mitigation, enhancement, and compensation measures are all encompassed within our formal planning considerations. This includes adherence to environmental policies, compliance with legislation, and fulfilment of obligations related to biodiversity net gain.

I trust that this conveys the thoroughness of our approach and our commitment to the ecological integrity of this project.

Yours Sincerely

Shula Rael
Brand and Communications Director
Boomtown Festival UK Ltd.

By virtue of paragraph(s) 1, 2, 7 of Part 1 of Schedule 12A of the Local Government Act 1972.

Document is Restricted

This page is intentionally left blank