


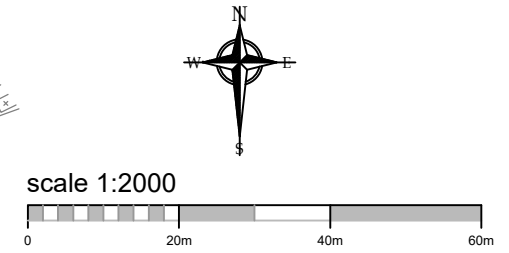
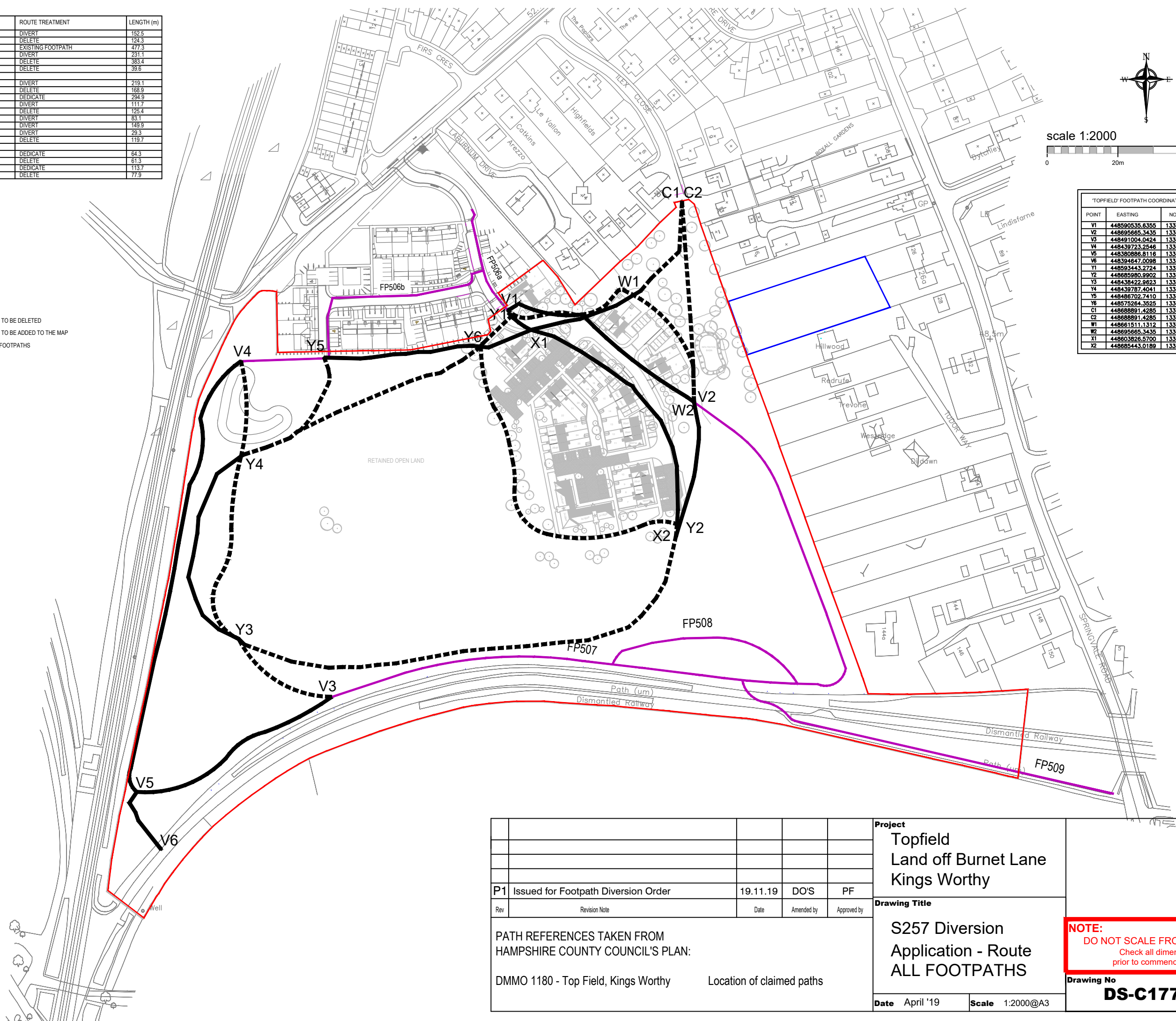


ROUTE DESCRIPTION	REFERENCE POINTS	ROUTE TREATMENT	LENGTH (m)
FP507	V1 to V2	DIVERT	152.5
FP507	V1 to V2	DELETE	124.3
FP507	V2 to V3	EXISTING FOOTPATH	477.3
FP507	V3 to V4	DIVERT	231.1
FP507	V3 to V4	DELETE	383.4
FP507	V5 to V6	DELETE	39.5
A - Setaide Path	Y1 to Y2	DIVERT	219.1
A - Setaide Path	Y1 to Y2	DELETE	168.9
A - Setaide Path	Y2 to Y3	DEDICATE	294.9
A - Setaide Path	Y3 to Y4	DIVERT	111.7
A - Setaide Path	Y3 to Y4	DELETE	125.4
A - Setaide Path	Y4 to Y5	DIVERT	83.1
A - Setaide Path	Y4 to Y6	DIVERT	149.9
A - Setaide Path	Y6 to Y1	DIVERT	29.3
A - Setaide Path	Y5 to X1	DELETE	119.7
C1	Path from Ilex Close - C1 to W1	DEDICATE	64.3
C1	W1 to X1	DELETE	61.3
C2	Path from Ilex Close - C2 to W2	DEDICATE	113.7
C2	W2 to X2	DELETE	77.9

FOOTPATH KEY
 FOOTPATH TO BE DELETED
 FOOTPATH TO BE ADDED TO THE MAP
 RETAINED FOOTPATHS



POINT	EASTING	NORTHING
V1	448590535.6355	133703426.9902
V2	448695665.3435	133651644.1367
V3	448491004.0424	133485113.6340
V4	448439723.2546	133674745.6819
V5	448380896.8116	133431459.5114
V6	44839447.0098	133398904.9032
Y1	448593443.2724	133701095.3594
Y2	448685980.9902	133582639.1052
Y3	448438422.9623	133517843.2865
Y4	448439787.4041	133621039.2095
Y5	448486702.7410	133678738.3403
Y6	448575264.3525	133682887.9411
C1	448688891.4285	133765126.9557
C2	448688891.4285	133765126.9557
W1	448661511.1312	133712025.7570
W2	448695665.3435	133651644.1367
X1	448603826.5700	133692449.2955
X2	448685443.0189	133575704.5361



					Project Topfield Land off Burnet Lane Kings Worthy	
P1 Issued for Footpath Diversion Order					19.11.19	DO'S PF
Rev	Revision Note	Date	Amended by	Approved by	Drawing Title S257 Diversion Application - Route ALL FOOTPATHS	
PATH REFERENCES TAKEN FROM HAMPSHIRE COUNTY COUNCIL'S PLAN: DMMO 1180 - Top Field, Kings Worthy Location of claimed paths					Date April '19 Scale 1:2000@A3	
					NOTE: DO NOT SCALE FROM THIS DRAWING Check all dimensions on site prior to commencement of works	
					Drawing No DS-C1777-304-P1	